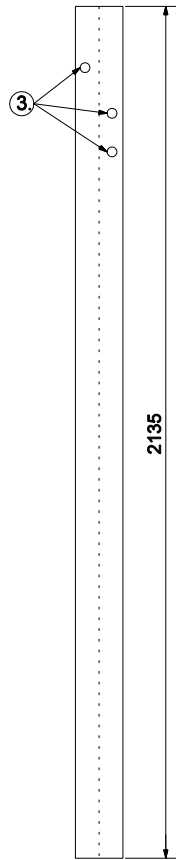
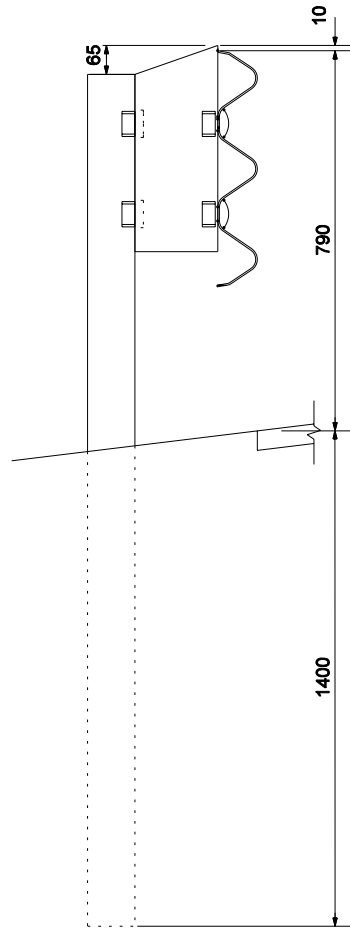


FRONT VIEW

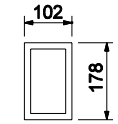


BACK VIEW

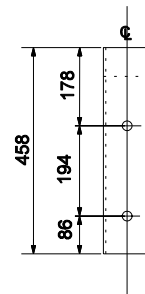


SIDE VIEW

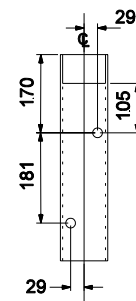
W 150 x 14 POST DETAILS



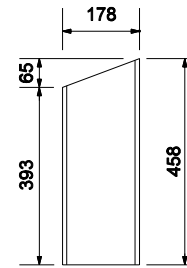
TOP VIEW



FRONT VIEW



BACK VIEW



SIDE VIEW

TS 178 x 102 x 4.8 BLOCK DETAILS

POSTS 1 THRU 7

NOTE:

1. All holes drilled or punched to 21 dia.
2. For post numbers See Standard Drawing 601-TTGB-01.
- ③ Hole pattern for posts numbers 8 thru 10 may be drilled in back flange. See Standard drawing 601-TTGB-04 or 601-TTGB-05.

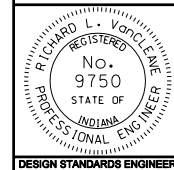
All Dimension are in mm unless otherwise specified

INDIANA DEPARTMENT OF TRANSPORTATION

**GUARDRAIL TRANSITION
TYPE TGB**

MARCH 2004

STANDARD DRAWING NO. 601-TTGB-03



/s/ Richard L. VanCleave 3-01-04
DESIGN STANDARDS ENGINEER DATE

/s/ Richard K. Smutzer 3-01-04
CHIEF HIGHWAY ENGINEER DATE

DESIGN STANDARDS ENGINEER