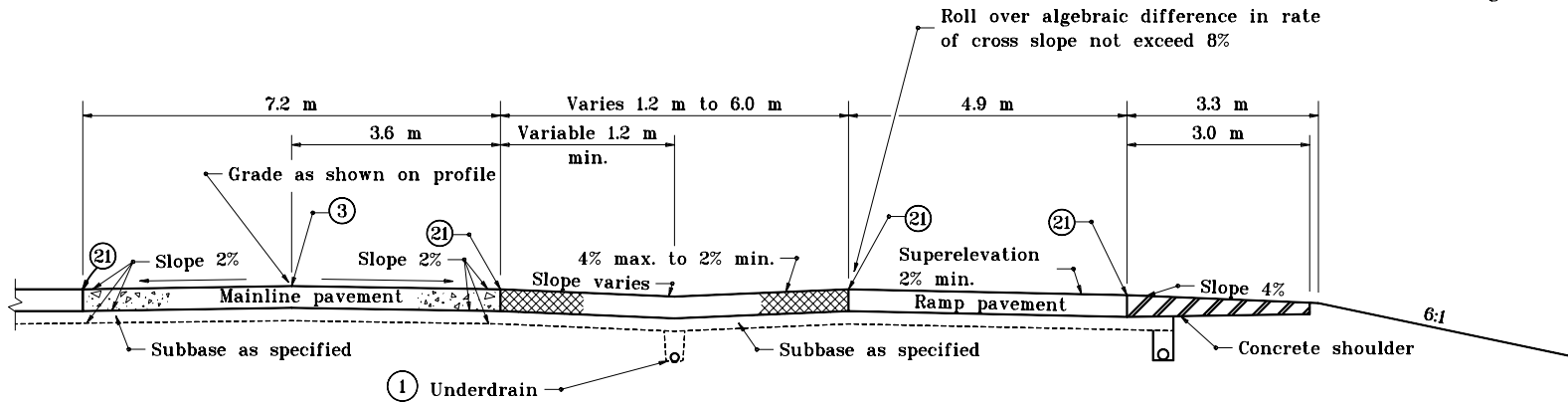
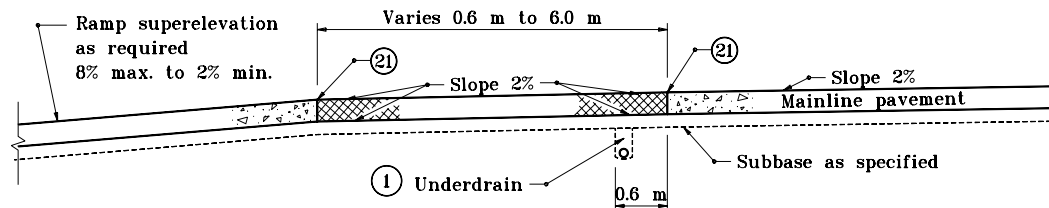


**GENERAL NOTES**

- ① For underdrain details see Standard Drawing 718-UNDR-01.



**SECTION A-A**



**SECTION B-B**

**LEGEND**

- Ⓐ Pavement type and thickness as specified for the mainline.
- Ⓑ Pavement type and thickness as specified for ramps.
- ③ Longitudinal joint
- ② Longitudinal construction joint

- Concrete shoulder (Thickness of mainline pavement)
- Concrete shoulder (Thickness as specified on Typical Sections)

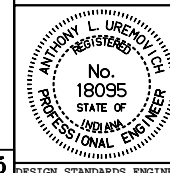
All dimensions are in mm unless otherwise specified.

INDIANA DEPARTMENT OF TRANSPORTATION

**RAMP CROSS SECTIONS  
CONCRETE SHOULDERS**

JANUARY 1999

STANDARD DRAWING NO. **501-RECS-03**



/s/ Anthony L. Uremovich 1-04-99  
DESIGN STANDARDS ENGINEER DATE

/s/ Donald W. Lucas 1-04-99  
CHIEF HIGHWAY ENGINEER DATE

Source Sheet: **MV5**

DESIGN STANDARDS ENGINEER