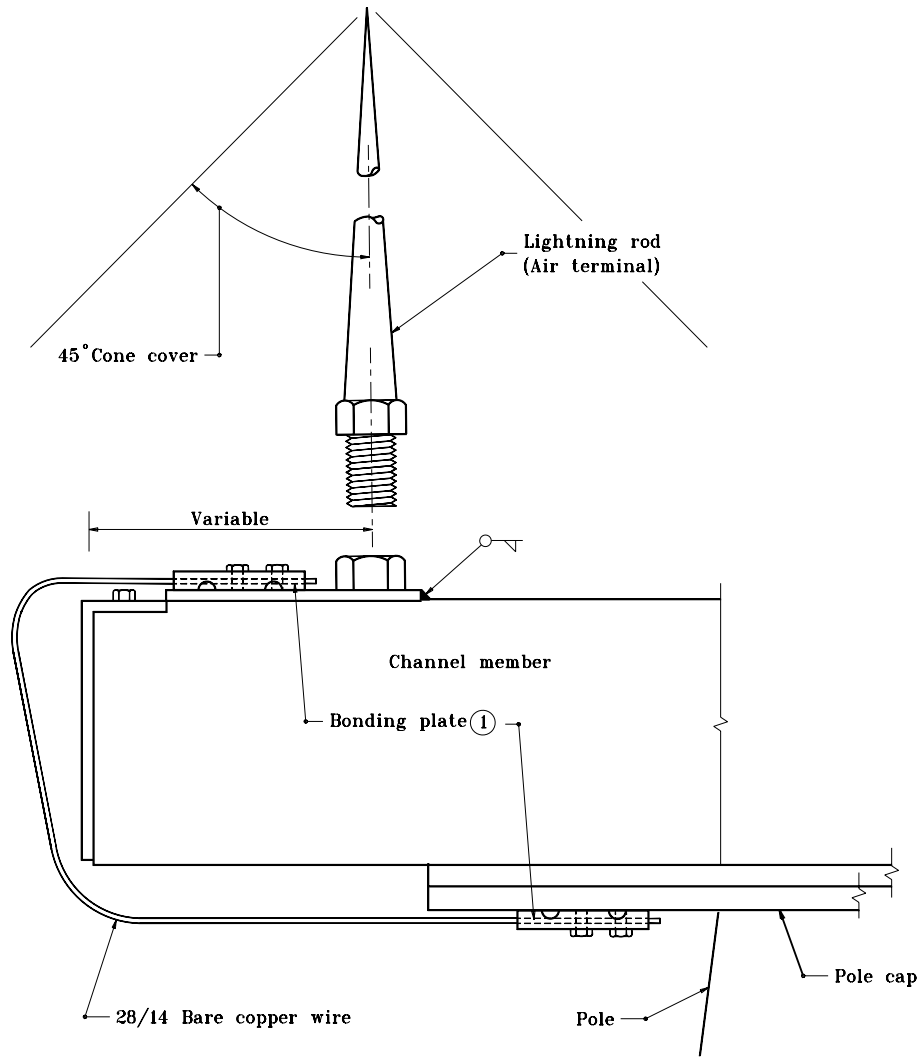


NOTES

- ① See Standard Drawing E 807-LTLR-02 for Detail A.



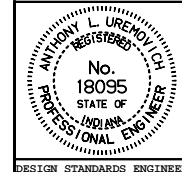
CHANNEL MOUNT

INDIANA DEPARTMENT OF TRANSPORTATION

**LIGHTNING ROD
TYPICAL DETAILS**

MARCH 1995

STANDARD DRAWING NO. **E 807-LTLR-04**



DETAILS PLACED IN THIS FORMAT 11-15-99
 /s/ Anthony L. Uremovich 11-15-99
 DESIGN STANDARDS ENGINEER DATE

/s/ Firooz Zandi 11-15-99
 CHIEF HIGHWAY ENGINEER DATE
 ORIGINALLY APPROVED 3-01-95

DESIGN STANDARDS ENGINEER