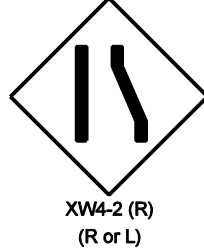
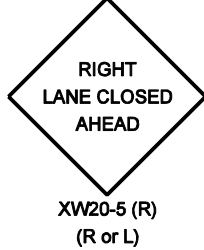
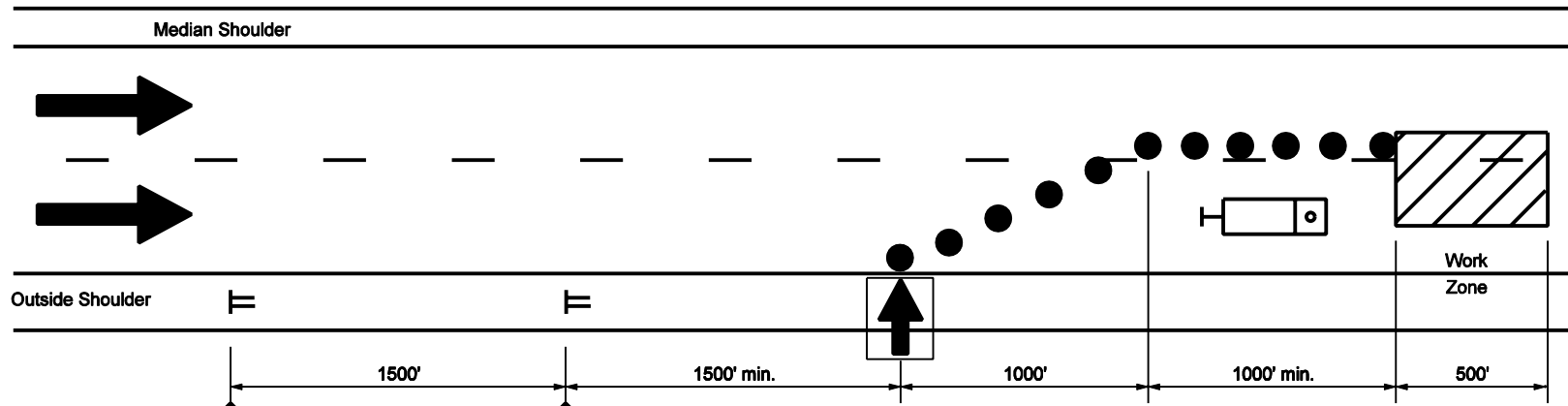
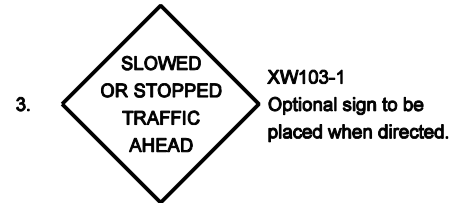


MULTI-LANE DIVIDED HIGHWAY



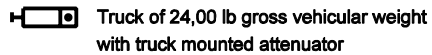
GENERAL NOTES

- Distances shown are approximate and may be adjusted as directed.
- Strobe lights will be required on all vehicles.
- See Standard Drawing E 801-TCDV-01 for channelizing devices.
- See Standard Drawing E 801-TCDV-05 for sign mounting.



- Lane closure length shall be a maximum of 3 mi. as directed by Engineer to meet field conditions.

LEGEND



INDIANA DEPARTMENT OF TRANSPORTATION	
MAINTENANCE OF TRAFFIC FOR RPM CASTING INSTALLATION	
SEPTEMBER 2002	
STANDARD DRAWING NO. E 801-TCTC-06	
	/s/ Richard L. VanCleave 9-03-02 DESIGN STANDARDS ENGINEER DATE
	/s/ Richard K. Smutzer 9-03-02 CHIEF HIGHWAY ENGINEER DATE
DESIGN STANDARDS ENGINEER	