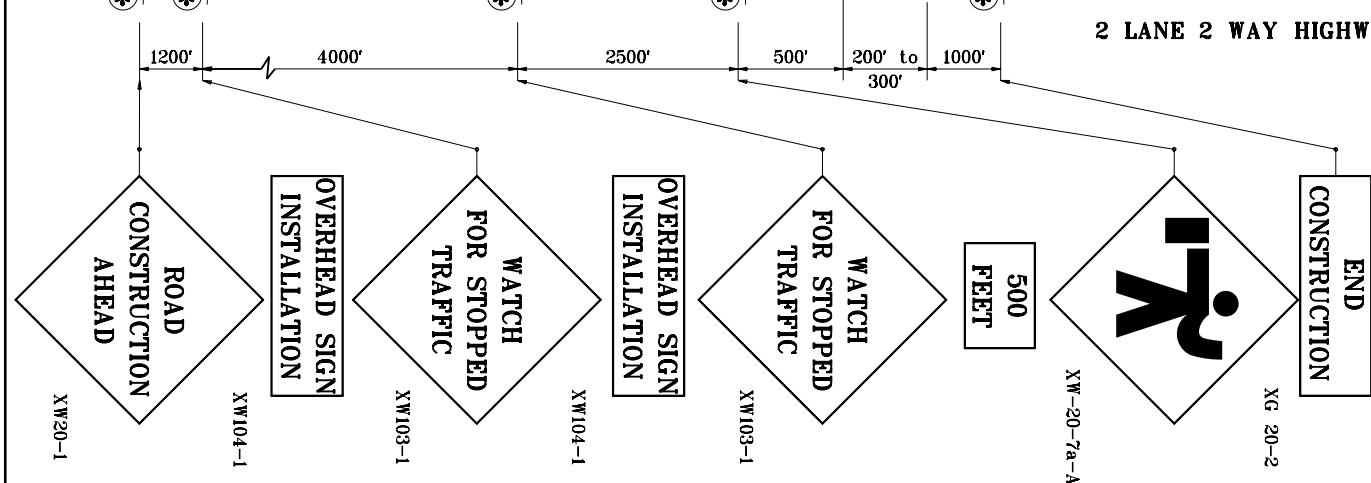


2 LANE 2 WAY HIGHWAY

**GENERAL NOTES**

1. See standard drawing E 801-TCLG-01 for Legend and General notes.



INDIANA DEPARTMENT OF TRANSPORTATION	
<b>TRAFFIC CONTROL FOR OVERHEAD SIGN INSTALLATION</b>	
SEPTEMBER 1997	
<b>STANDARD DRAWING NO. E 801-TCF0-04</b>	
DETAILS PLACED IN THIS FORMAT 11-15-99	
	/s/ Anthony L. Uremovich 11-15-99 DESIGN STANDARDS ENGINEER DATE
	/s/ Firooz Zandi 11-15-99 CHIEF HIGHWAY ENGINEER DATE
	ORIGINALLY APPROVED 9-01-97