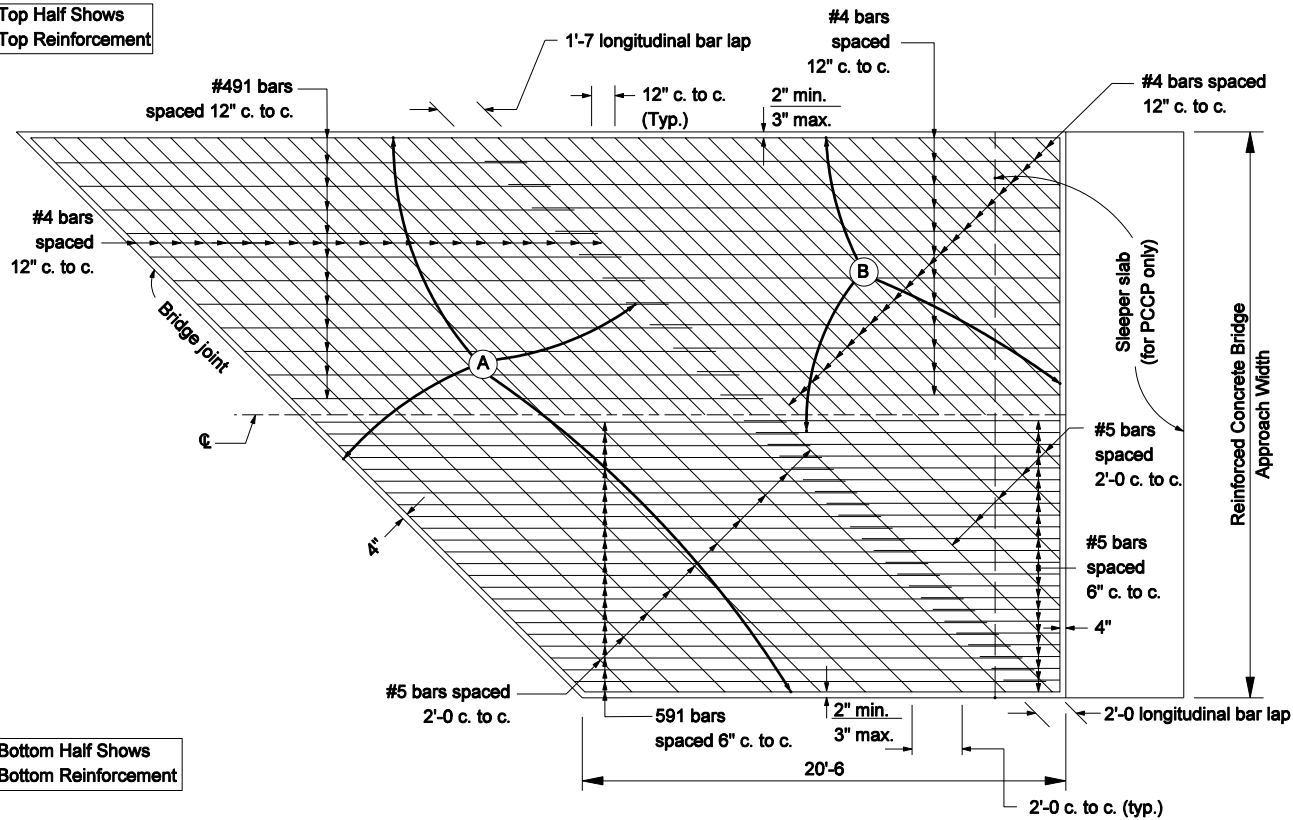
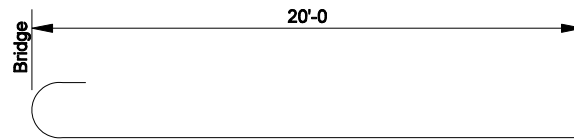


Top Half Shows
Top Reinforcement



Bottom Half Shows
Bottom Reinforcement

REINFORCEMENT DETAIL FOR SKEWED APPROACH



591 x 20'-7
491 x 20'-6

NOTES

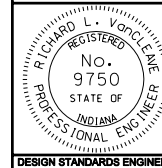
1. Area (A) includes all bars of equal length.
2. Area (B) includes all bars of unequal length.
3. See Standard Drawing E 609-RCBA-06 for Bill of Materials.
4. All reinforcing bars shall be epoxy coated.

INDIANA DEPARTMENT OF TRANSPORTATION

**REINFORCED CONCRETE
BRIDGE APPROACH**

MARCH 2004

STANDARD DRAWING NO. E 609-RCBA-04



/s/ Richard L. VanCleave 03-01-04
DESIGN STANDARDS ENGINEER DATE

/s/ Richard K. Smutzer 3-01-04
CHIEF HIGHWAY ENGINEER DATE

DESIGN STANDARDS ENGINEER