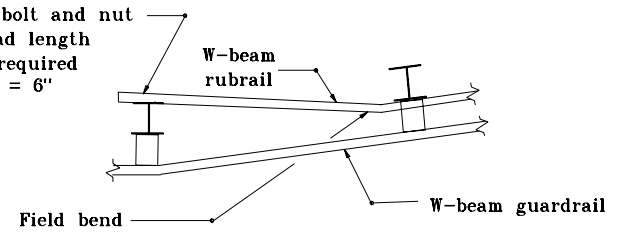
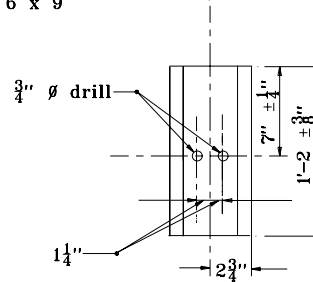
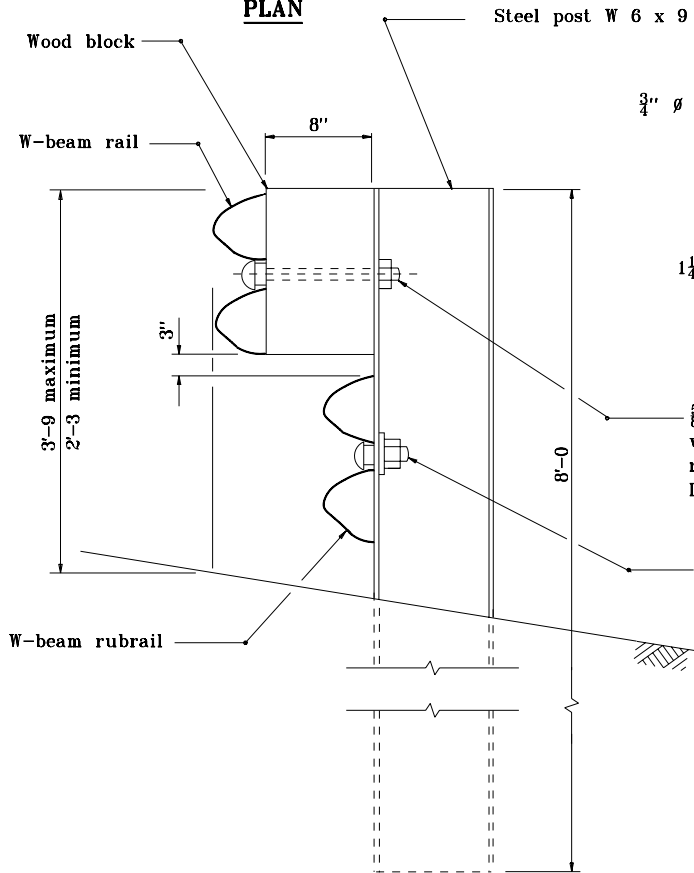


M16 hex bolt and nut
thread length
as required
L = 6"



RUBRAIL TERMINATION DETAIL

PLAN



WOOD BLOCK

5/8" button head guardrail bolt
with heavy hex nut 1" Ø x 1/8" deep
recess both sides.
L = 10", thread length T (min.) = 4"

5/8" button head bolt with
hex nut recessed both sides
Thread length T (min.) = 2", L = 2"

ELEVATION

**STEEL POST AND WOOD BLOCK DETAIL
FOR WR-BEAM GUARDRAIL**

NOTES:

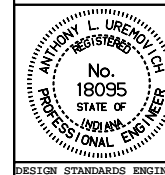
1. All posts shall be 8'-0 long and spaced at 6'-3.

INDIANA DEPARTMENT OF TRANSPORTATION

WR-BEAM GUARDRAIL

SEPTEMBER 2000

STANDARD DRAWING NO. E 601-WBGA-06



/s/ Anthony L. Uremovich 9-01-00
DESIGN STANDARDS ENGINEER DATE

/s/ Firooz Zandi 9-01-00
CHIEF HIGHWAY ENGINEER DATE

DESIGN STANDARDS ENGINEER