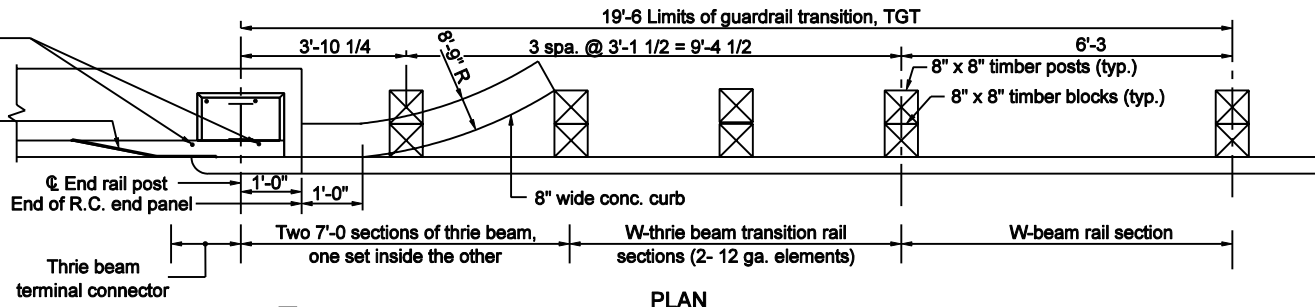


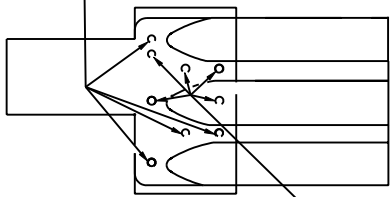
2 - 1" ϕ holes through each rail tube. Extend through both top and bottom faces of tube.

Connection/Deflector Plate



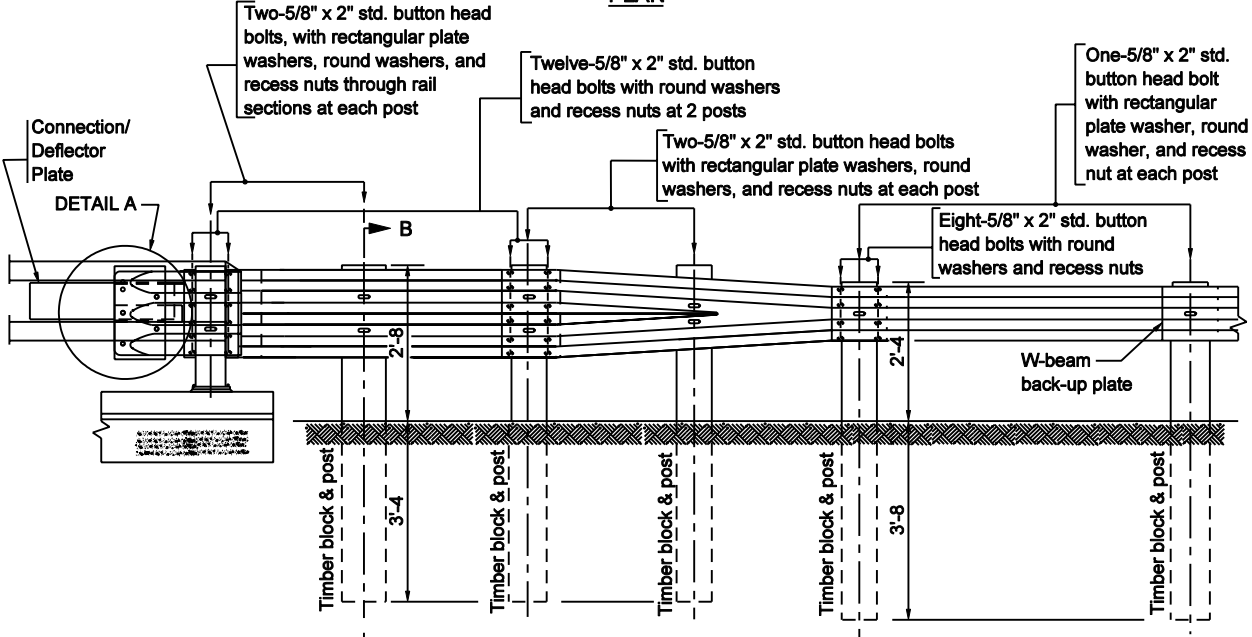
PLAN

Four-7/8" x 1" std. button head bolts, with rectangular plate washers, round washers, and recess nuts through rail sections.

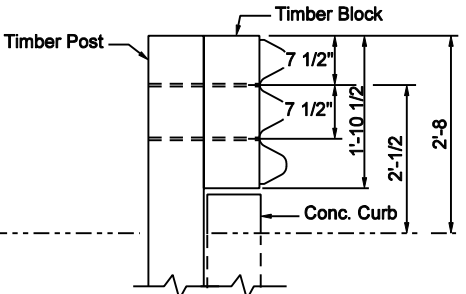


Drill and tap 5 holes for 7/8" x 1 1/2" std. button head bolts, with rectangular plate washers, round washers, and recess nuts through rail sections

DETAIL A



ELEVATION



SECTION B - B

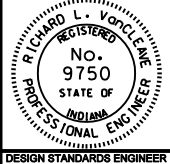
NOTES:

1. See Standard Drawing E 601-TBGC-01 and E 601-TBGC-02 for thrie beam transition details.
2. See Standard Drawing E 601-TTGT-02 for transition connection detail, timber post detail and timber block detail.

INDIANA DEPARTMENT OF TRANSPORTATION
GUARDRAIL TRANSITION, TGT

SEPTEMBER 2003

STANDARD DRAWING NO. E 601-TTGT-01



/s/ Richard L. VanCleave 9-02-03
DESIGN STANDARDS ENGINEER DATE

/s/ Richard K. Smutzer 9-02-03
CHIEF HIGHWAY ENGINEER DATE

DESIGN STANDARDS ENGINEER