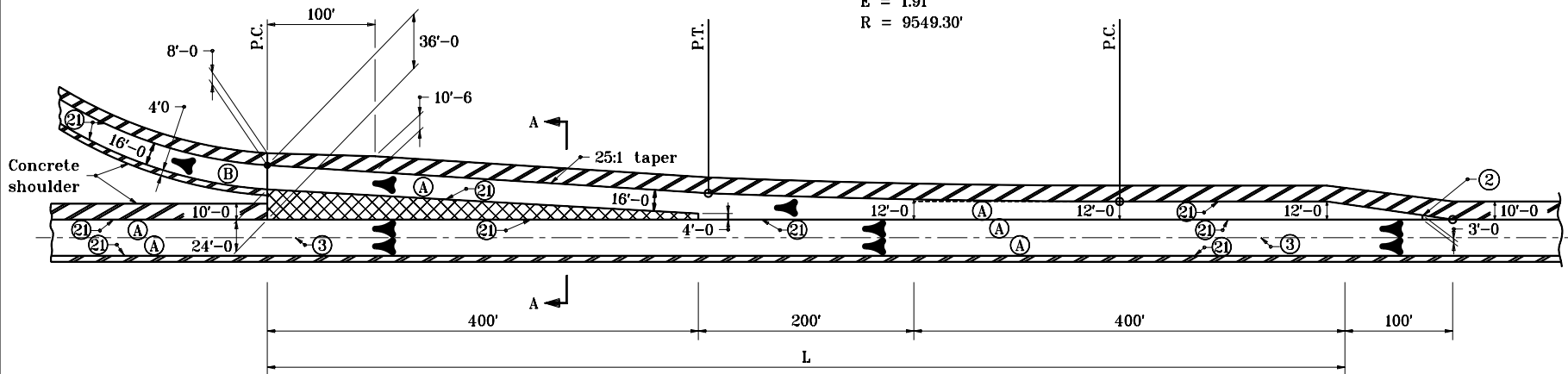


**GENERAL NOTES**

1. Pavement contraction joints shall be extended through the concrete shoulder in the gore areas.
- ② Shoulder corrugations shall be omitted in this area.
3. See tables on Standard Drawing E 401-REBS-04.
4. See Standard Drawing E 501-RECS-03 for Section A-A.

**CURVE DATA**

$\Delta = 2^\circ 17' 26''$   
 $T = 190.91'$   
 $L = 381.76'$   
 $E = 1.91'$   
 $R = 9549.30'$



**EXIT**

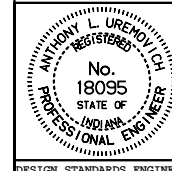
**LEGEND**

- Ⓐ Pavement type and thickness as specified for the mainline.
- Ⓑ Pavement type and thickness as specified for ramps.
- ③ Longitudinal joint
- ②① Longitudinal construction joint
- ▨ Concrete shoulder (Thickness of mainline pavement)
- ▩ Concrete shoulder (Thickness as specified on Typical Sections)

INDIANA DEPARTMENT OF TRANSPORTATION

**RAMP EXIT TERMINAL  
CONCRETE SHOULDER**  
SEPTEMBER 1999

STANDARD DRAWING NO. E 501-RECS-02



DETAILS PLACED IN THIS FORMAT 11-15-99

/s/ Anthony L. Uremovich 11-15-99  
DESIGN STANDARDS ENGINEER DATE

/s/ Firooz Zandi 11-15-99  
CHIEF HIGHWAY ENGINEER DATE

DESIGN STANDARDS ENGINEER

ORIGINALLY APPROVED 9-01-99