

SIDEWALKS

- ① For section H-H see sheet number 724-BSSJ-08.
- ② The extrusion and plate assemblies with anchors shall be miter cut and shop spliced at this location. A miter cut, vulcanized shop splice will be required in the strip seal at this location.
- ③ The extrusion and plate assemblies with anchors shall be shop prepared for field welding at this location. A miter cut vulcanized shop splice will be required in the strip seal at this location.
- ④ The joint shall be placed parallel to the lower sloped face of the rail with a maximum 75 mm depth to the top of the extrusion.

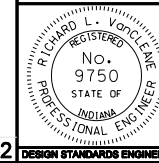
All Dimensions are in mm unless otherwise specified

INDIANA DEPARTMENT OF TRANSPORTATION

**EXPANSION JOINTS
CLASS SS**

MARCH 2005

STANDARD DRAWING NO. 724-BSSJ-06



/s/ Richard L. VanCleave 3-01-05
DESIGN STANDARDS ENGINEER DATE

/s/ Richard K. Smutzer 3-01-05
CHIEF HIGHWAY ENGINEER DATE

Source Sheet: SS-2

DESIGN STANDARDS ENGINEER