

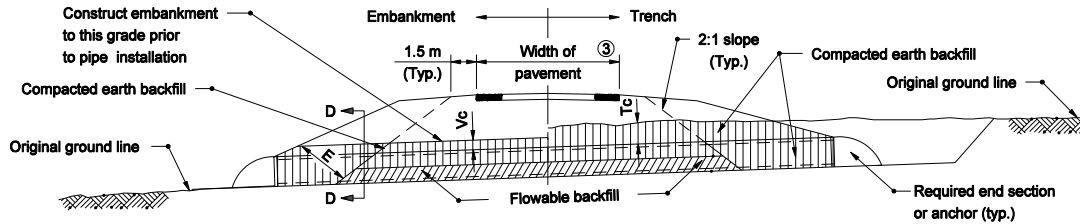
SECTION D-D
EMBANKMENT/TRENCH INSTALLATION
ROCK FOUNDATION

LEGEND

- Hc = Overall diameter or rise
- Bc = Overall diameter or span
- A = 200 min. for fill height up to 5.0 m
= 300 min. for fill height of 5.0 m or more
- Vc = 300 for Bc < 450
= 500 for Bc > 450
- Tc = Trench cover depth
- W = 150 for Bc ≤ 525
= 0.3 Bc for 525 < Bc ≤ 1050
= 300 for Bc > 1050
- ⑦ E = Encasement

METHOD 2 BACKFILL

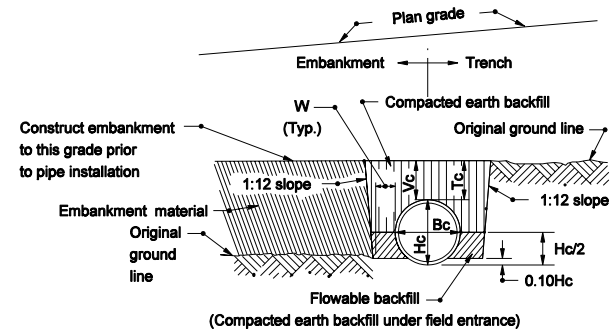
Structures under commercial and private drive approaches.



ELEVATION

NOTES

1. Refer to Standard Drawing 715-BKFL-09 for general notes.



SECTION D-D
EMBANKMENT/TRENCH INSTALLATION

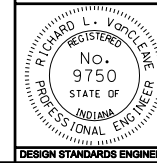
All Dimension are in mm unless otherwise specified

INDIANA DEPARTMENT OF TRANSPORTATION

PIPE STRUCTURE BACKFILL
DRIVEWAY INSTALLATIONS

MARCH 2005

STANDARD DRAWING NO. 715-BKFL-08



/s/ Richard L. VanCleave 3-01-05
DESIGN STANDARDS ENGINEER DATE

/s/ Richard K. Smutzer 3-01-05
CHIEF HIGHWAY ENGINEER DATE

DESIGN STANDARDS ENGINEER