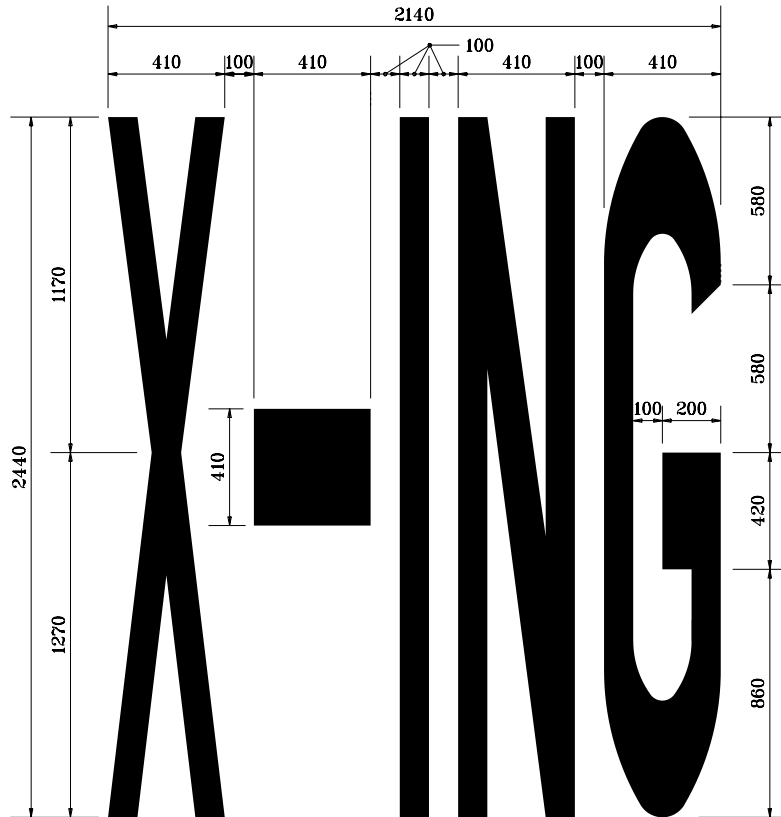


**GENERAL NOTES**

1. Horizontal strokes are 1'-4 wide.  
vertical strokes are 4" wide.
2. See Standard Drawing 807-  
MKPM-04 for Details for "G".



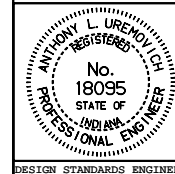
All dimensions are in mm unless otherwise specified.

INDIANA DEPARTMENT OF TRANSPORTATION

**TRANSVERSE MARKINGS**

JANUARY 2000

STANDARD DRAWING NO. **808-MKPM-05**



*/s/ Anthony L. Uremovich* 1-03-00  
DESIGN STANDARDS ENGINEER DATE

*/s/ Firooz Zandi* 1-03-00  
CHIEF HIGHWAY ENGINEER DATE

DESIGN STANDARDS ENGINEER