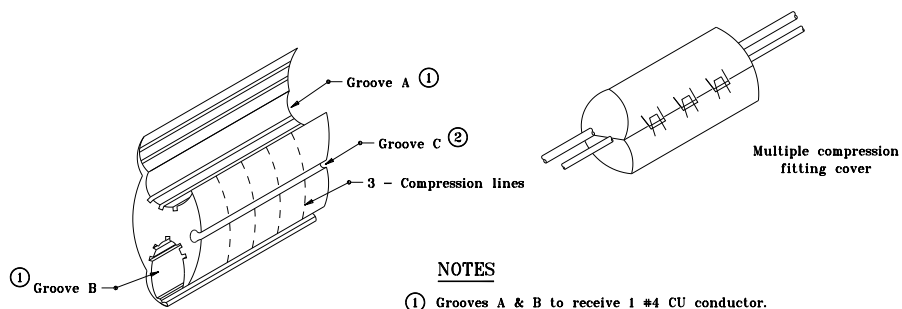


DETAIL A
ALTERNATIVE GROUNDING POSTS



DETAIL B
MULTIPLE COMPRESSION FITTING

NOTES

- ① Grooves A & B to receive 1 #4 CU conductor.
- ② Groove C to receive 1 #10 CU conductor.

LEGEND

- ⊙ — Grounding post
- — Self insulated splicer (insulating link)
- — Unfused connector
- ⊠ — Fused connector
- ⊞ — Compression connector

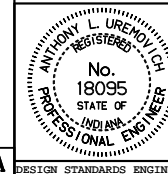
All dimensions are in mm unless otherwise specified.

INDIANA DEPARTMENT OF TRANSPORTATION

LIGHTING WIRING DETAILS

JANUARY 1996

STANDARD DRAWING NO. 807-LTWR-02



/s/ Anthony L. Uremovich 1-02-96
DESIGN STANDARDS ENGINEER DATE

/s/ Donald W. Lucas 1-02-96
CHIEF HIGHWAY ENGINEER DATE

Source Sheet: MT 6A