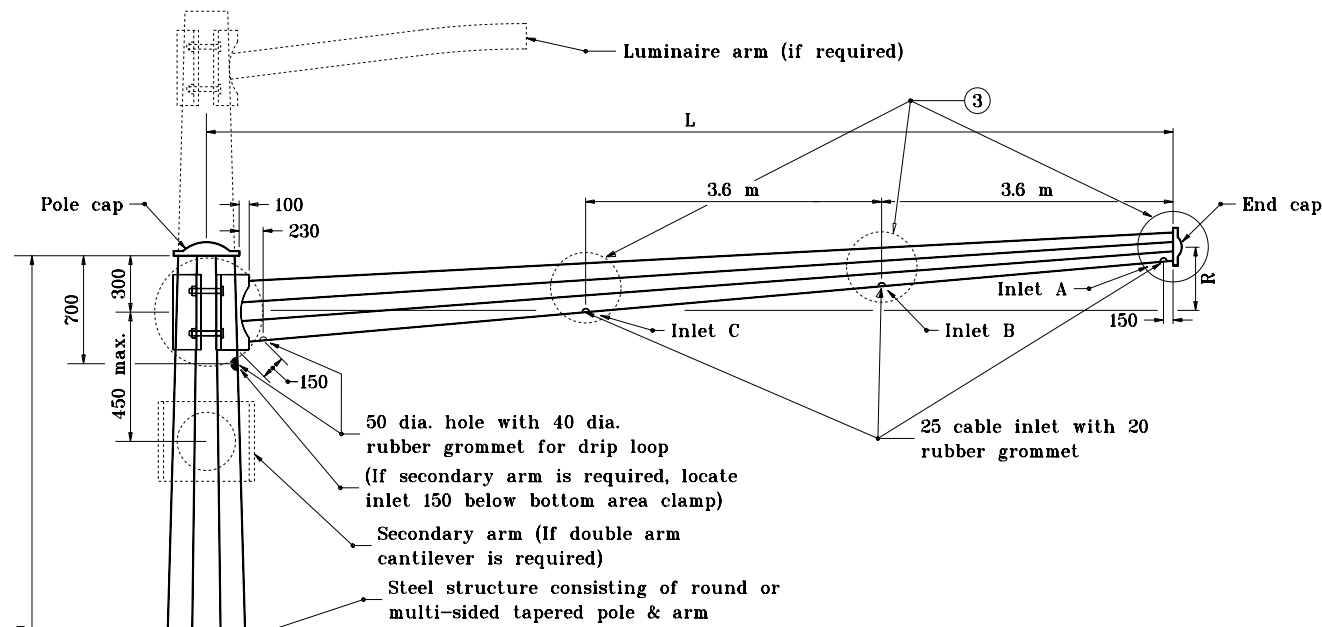


GENERAL NOTES

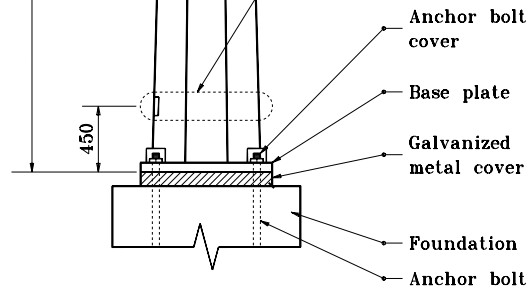
1. The upper 1.2 m to 1.8 m of the pole can be non-tapered.
- ② See Standard Drawing 805-SGMA-04 for Detail B.
- ③ See Standard Drawing 805-SGMA-04 for Detail C.



L (m) *	R After Loading	Cable Inlets Req'd.
3.6	150	A
4.6	190	A, B
6.1	250	A, B
7.6	320	A, B
9.1	380	A, B
10.7	450	A, B, C
12.2	510	A, B, C

* The lengths listed in this table are the only permissible lengths

Pole height (varies)



Vertical Clearance Criteria
 Maintain 4.9 m minimum mast arm clearance above pavement.
 Maintain 5.2 m minimum and 5.8 m maximum clearances from top of pavement to lowest signal head.

All dimensions are in mm unless otherwise specified.

INDIANA DEPARTMENT OF TRANSPORTATION

SIGNAL CANTILEVER

SINGLE ARM

SEPTEMBER 1998

STANDARD DRAWING NO. **805-SGMA-01**

ANTHONY L. UREMOWICZ
REGISTERED
No. 18095
STATE OF INDIANA
PROFESSIONAL ENGINEER

/s/ Anthony L. Uremovich 9-01-98
DESIGN STANDARDS ENGINEER DATE

/s/ Donald W. Lucas 9-01-98
CHIEF HIGHWAY ENGINEER DATE

Source Sheet: NONE