

10.7 m wood pole class V

25 mm weatherhead service entrance

300  
300  
max.

Power cable (drip loop)

25 conduit

Two hole pipe straps  
or 20 mm S.S. bands  
with conduit hangers  
every 1.5 m (max. spacing)

Meter (if required)

Ground wire in  
13 dia. conduit

25 hub plate  
and close nipple

Entrance switch

Hub plate

50 conduit

Two hole steel pipe straps  
or 20 mm S.S. bands with  
conduit hangers.

1.2 m

600

150-300

600

Ground rod

300  
min.

All dimensions are in mm unless otherwise specified.

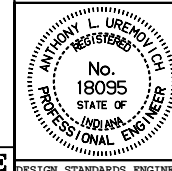
INDIANA DEPARTMENT OF TRANSPORTATION

SIGNAL SERVICE

ON WOOD POLE

SEPTEMBER 1998

STANDARD DRAWING NO. 805-SGCO-03



/s/ Anthony L. Uremovich 9-01-98  
DESIGN STANDARDS ENGINEER DATE

/s/ Donald W. Lucas 9-01-98  
CHIEF HIGHWAY ENGINEER DATE

Source Sheet: NONE

DESIGN STANDARDS ENGINEER