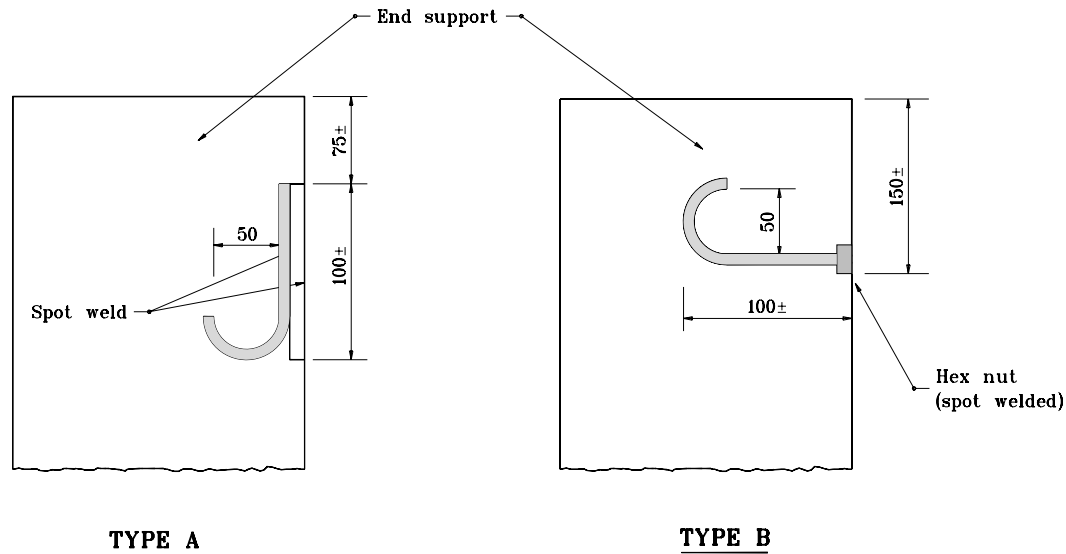


J HOOKS



NOTES:

1. Type A hook shall consist of two 6 mm to 10 mm stainless steel bars, constructed as shown in detail above and spot welded to inside of the end support.
2. Type B hook shall consist of one 10 mm to 10 mm stainless steel bar shaped as shown in detail above, threaded on straight end and fastened to inside by means of a hex nut spot welded to the end support.

All dimensions are in mm unless otherwise specified.

INDIANA DEPARTMENT OF TRANSPORTATION	
SIGN STRUCTURE TRUSS	
DETAILS	
SEPTEMBER 2001	
STANDARD DRAWING NO. 802-SNOH-02	
	/s/ <i>Anthony L. Uremovich</i> 9-04-01 DESIGN STANDARDS ENGINEER DATE
	/s/ <i>Firooz Zandi</i> 9-04-01 CHIEF HIGHWAY ENGINEER DATE