

GENERAL NOTES

1. Standard Drawing Nos. 724-BSSJ-05 through 09 shall be used in conjunction with Standard Drawing Nos. 724-BSSJ-01 through 04.
2. The details shown on Standard Drawing Nos. 724-BSSJ-05 through 09 are the only approved methods of placing Class SS Joints in curbs, sidewalks, concrete bridge railing and under metal bridge railing.
3. The locations of the anchor plates in sidewalks and in the concrete barrier bridge rail shall be as shown on the approved shop drawings but in no case shall the spacing exceed 230 mm.

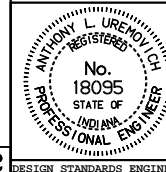
All dimensions are in mm unless otherwise specified.

INDIANA DEPARTMENT OF TRANSPORTATION

EXPANSION JOINTS CLASS SS

SEPTEMBER 1994

STANDARD DRAWING NO. **724-BSSJ-09**



/s/ Anthony L. Uremovich 9/30/94
DESIGN STANDARDS ENGINEER DATE

/s/ Donald W. Lucas 9/30/94
CHIEF HIGHWAY ENGINEER DATE

Source Sheet: SS-2

DESIGN STANDARDS ENGINEER