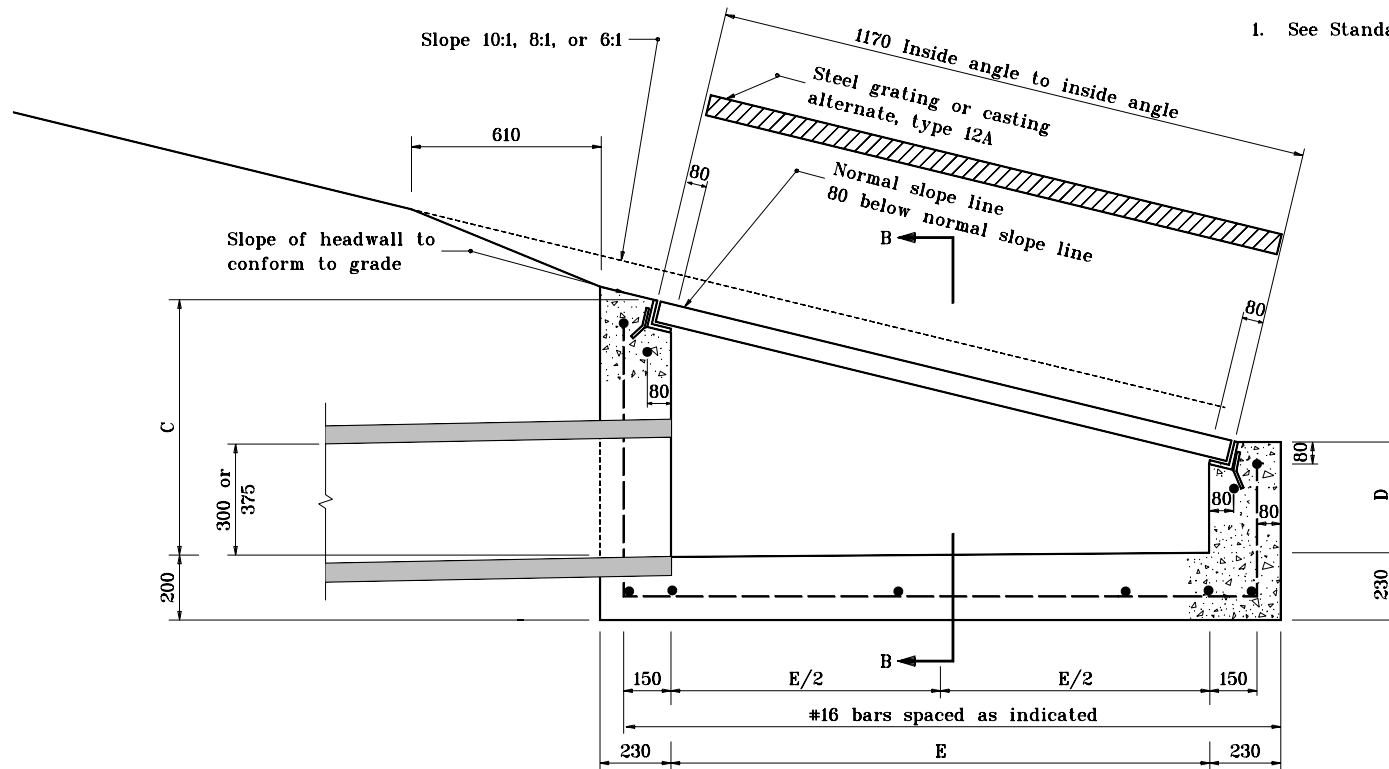


GENERAL NOTES

1. See Standard Drawing 720-INST-08 for Section B-B.



TYPE P INLET									
PIPE SIZE	6:1			8:1			10:1		
	C	D	E	C	D	E	C	D	E
300	550	330	1000	550	370	1010	550	400	1010
375	630	410	1000	630	460	1010	630	490	1010

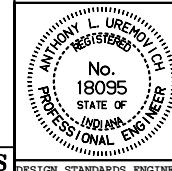
All dimensions are in mm unless otherwise specified.

INDIANA DEPARTMENT OF TRANSPORTATION

INLET TYPE P

MAY 1998

STANDARD DRAWING NO. 720-INST-09



/s/ Anthony L. Uremovich 5-01-98
DESIGN STANDARDS ENGINEER DATE

/s/ Donald W. Lucas 5-01-98
CHIEF HIGHWAY ENGINEER DATE

Source Sheet: MS

DESIGN STANDARDS ENGINEER