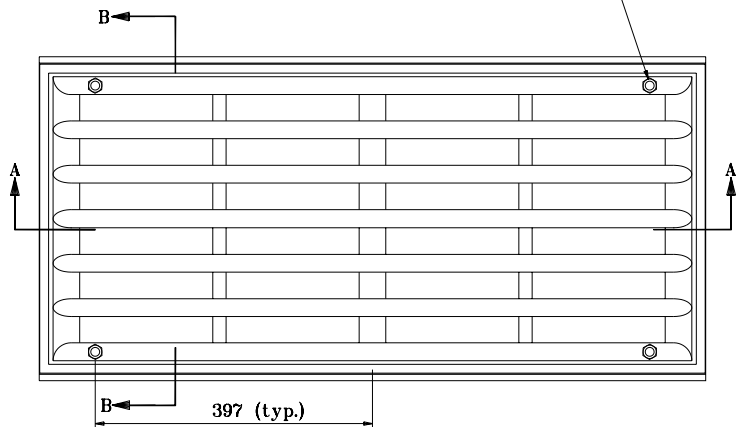
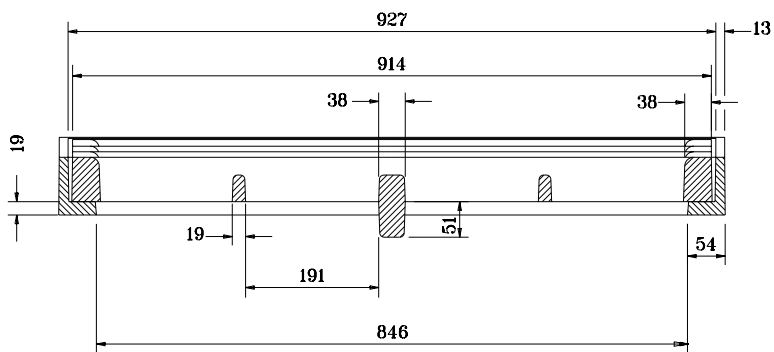


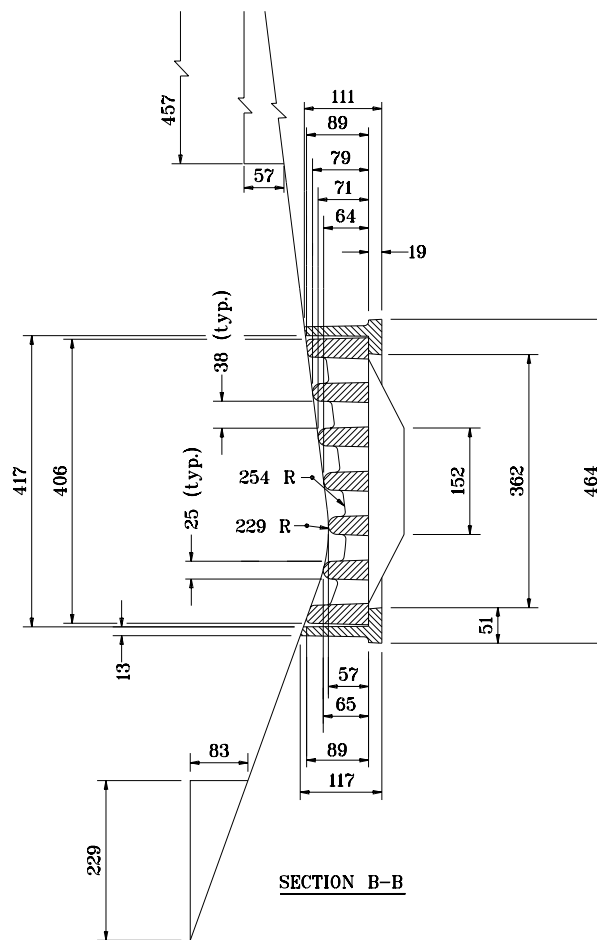
Drill and tap for
10 x 51 stainless steel
hex bolt with washer (4 places)



PLAN



SECTION A-A



SECTION B-B

All dimensions are in mm unless otherwise specified.

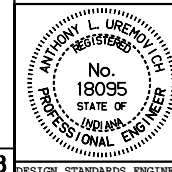
INDIANA DEPARTMENT OF TRANSPORTATION

INLET CASTING

TYPE 6

SEPTEMBER 1998

STANDARD DRAWING NO. 720-INCA-01



/s/ Anthony L. Uremovich 9-01-98
DESIGN STANDARDS ENGINEER DATE

/s/ Donald W. Lucas 9-01-98
CHIEF HIGHWAY ENGINEER DATE

Source Sheet: MC3