

MATERIAL	PIPE TYPE				
	1	2	3	4	5
Non-Reinforced Concrete Pipe				X	
Non-Reinforced Concrete Pipe, Class 3 (S)	X	X	X		
Reinforced Concrete Pipe (S)	X	X	X		
Reinforced Concrete Horizontal Elliptical Pipe (S)	X	X	X		
Corrugated Steel Pipe (C)	X		X		X
Corrugated Steel Pipe-Arch (C)	X		X		X
Polymer Precoated Galvanized Corrugated Steel Pipe (C)	X		X		X
Fiber Bonded Bituminous Coated Corrugated Steel Pipe (C)	X		X		X
Fully Bituminous Coated and Lined Corrugated Steel Pipe (S)		X			X
Fiber Bonded Bituminous Coated Corrugated Steel Pipe-Arch (C)	X		X		X
Fully Bituminous Coated and Lined Corrugated Steel Pipe-Arch (S)		X			X
Corrugated Aluminum Alloy Pipe (C)	X		X		X
Corrugated Aluminum Alloy Pipe-Arch (C)	X		X		X
Structural Plate Steel Pipe (C)	X		X		
Polymer Precoated Galvanized Corrugated Steel Pipe-Arch (C)	X		X		X

### LEGEND

(C)- Corrugated Interior Culvert Pipe.

(S)- Smooth Interior Culvert or Storm Sewer Pipe.

### GENERAL NOTES

1. The prescribed uses for the pipe types are as follows:

- Type 1 Pipe - Culverts under mainline pavement and public road approaches.
- Type 2 Pipe - Storm sewer pipe.
- Type 3 Pipe - Culverts under driveways and field entrances.
- Type 4 Pipe - Drain tile and longitudinal underdrains.
- Type 5 Pipe - Broken back and other installations requiring coupled pipe.

2. Refer to Standard Drawings 715-PHCL-01 through 715-PHCL-23 and 717-PHCL-01 through 717-PHCL-10 for allowable heights of cover for various pipe materials (except Type 4 pipes).

3. Refer to Standard Drawings 715-PSLC-01 through 715-PSLC-03 for required pipe service life criteria.

4. Any pipe material which is in accordance with the designated pipe type, acceptable for cover conditions, and conforms to service life criteria may be installed.

MATERIAL	PIPE TYPE				
	1	2	3	4	5
Structural Plate Steel Pipe-Arch (C)	X		X		
Structural Plate Aluminum Alloy Pipe (C)	X		X		
Structural Plate Aluminum Alloy Pipe-Arch (C)	X		X		
Clay Pipe, Extra Strength (S)	X	X	X		
Clay Pipe				X	
Perforated Clay Pipe				X	
Corrugated Polyethylene Pipe, Type SP				X	
Corrugated Polyethylene Pipe, Type (S)	X	X	X	X	X
Ribbed Polyethylene Pipe (S)	X	X	X		X
Smooth Wall Polyethylene Pipe (S)	X	X	X		X
Corrugated Polyethylene Tubing				X	
Perforated PVC Semicircular Pipe				X	
Profile Wall PVC Pipe (S)	X	X	X	X	X
Smooth Wall PVC Pipe (S)	X	X	X		X
Concrete Drain Tile				X	
Clay Drain Tile				X	

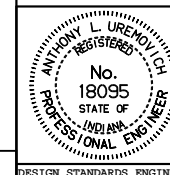
All dimensions are in mm unless otherwise specified.

INDIANA DEPARTMENT OF TRANSPORTATION

### PIPE CLASSIFICATION TABLES

JANUARY 1998

STANDARD DRAWING NO. 715-PIPE-01



/s/ Anthony L. Uremovich 1-02-98  
DESIGN STANDARDS ENGINEER DATE

/s/ Donald W. Lucas 1-02-98  
CHIEF HIGHWAY ENGINEER DATE

Source Sheet: MP/MPA