

SECTION A-A

RIPRAP METHOD
 For Span Width from
 3.0 m to less than 6.0 m

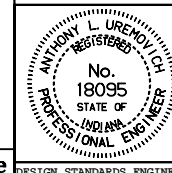
All dimensions are in mm unless otherwise specified.

INDIANA DEPARTMENT OF TRANSPORTATION

**THREE SIDED CONCRETE CULVERT
 SCOUR PROTECTION**

JANUARY 1999

STANDARD DRAWING NO. 714-CCSP-03



/s/ Anthony L. Uremovich 1-04-99
 DESIGN STANDARDS ENGINEER DATE

/s/ Donald W. Lucas 1-04-99
 CHIEF HIGHWAY ENGINEER DATE

Source Sheet: None