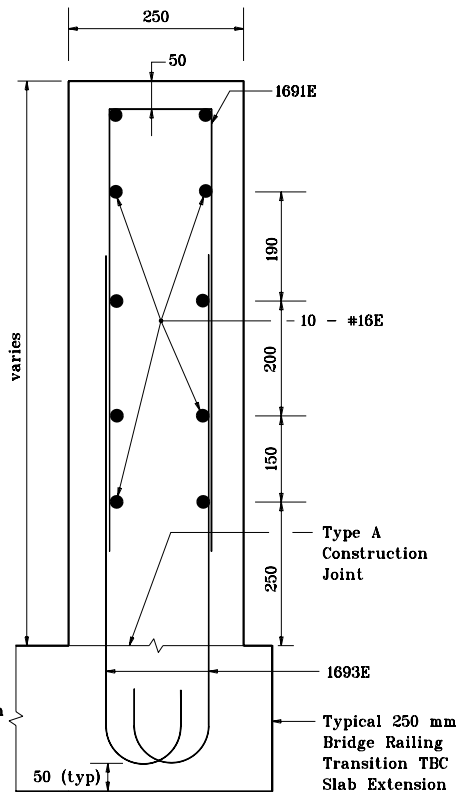
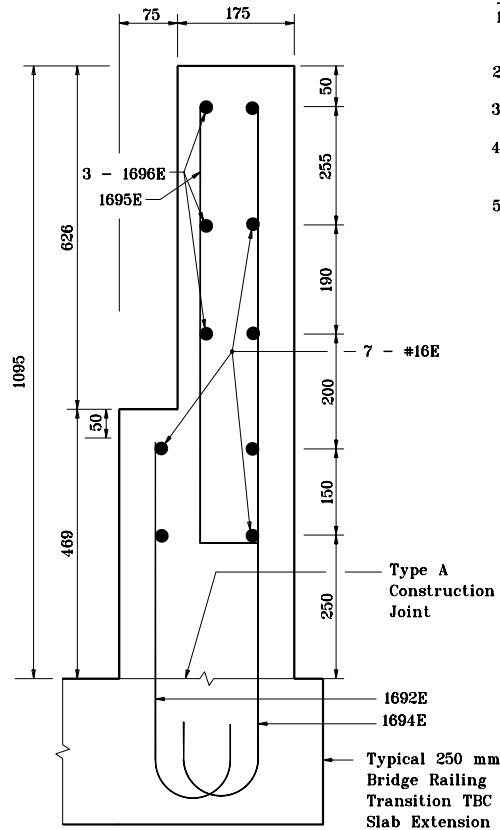


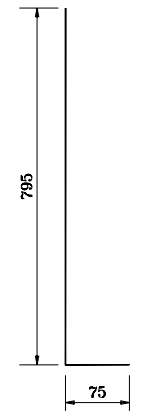
Section A - A



Section B - B



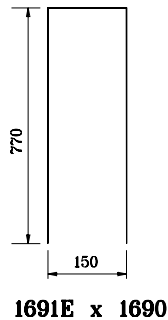
Section C - C



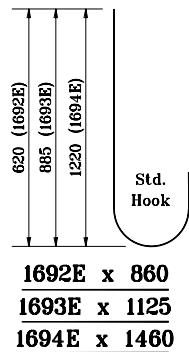
1695E x 870

NOTES:

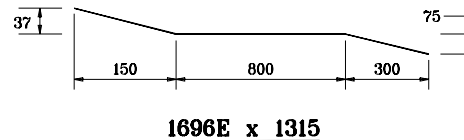
1. See Standard Drawing 703-BRST-01 for standard 180° bar bending detail.
2. All reinforcing bars designated "E" shall be epoxy coated.
3. Concrete in bridge railing transition to be class C.
4. See Standard Drawing 706-CBRT-02 for attachment of guardrail Type TGB.
5. See Standard Drawing 706-TASE-01, 02 & 05 for Bridge Railing Transition TBC Slab Extension.



1691E x 1690



1692E x 860
1693E x 1125
1694E x 1460



1696E x 1315

All dimensions are in mm unless otherwise specified.

INDIANA DEPARTMENT OF TRANSPORTATION	
CONCRETE BRIDGE RAILING TRANSITION, TPF-2	
MAY 2000	
STANDARD DRAWING NO. 706-TTBP-04	
	/s/ Anthony L. Uremovich 5-01-00 DESIGN STANDARDS ENGINEER DATE
	/s/ Firooz Zandi 5-01-00 CHIEF HIGHWAY ENGINEER DATE
DESIGN STANDARDS ENGINEER	