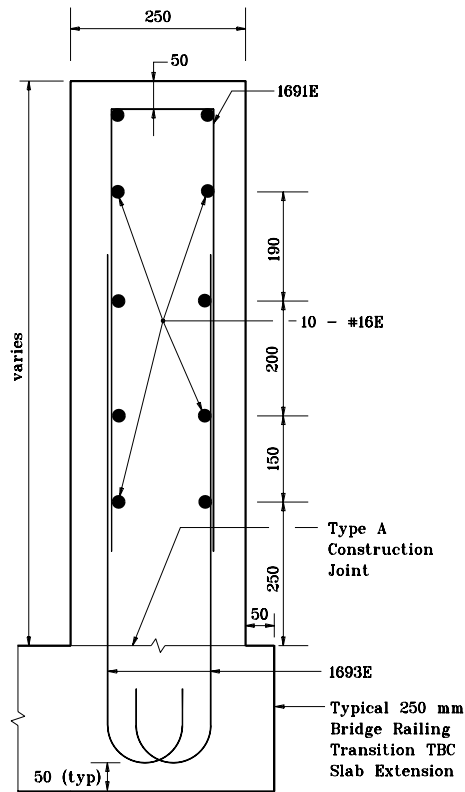
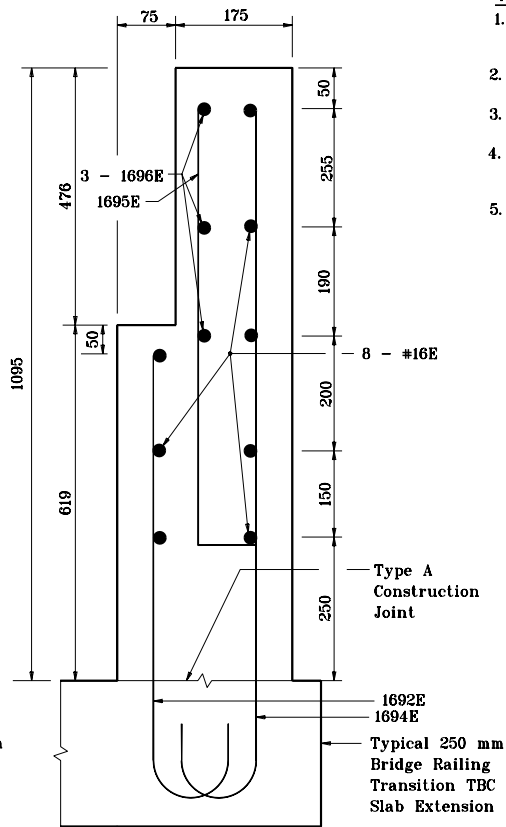


**Section A - A**



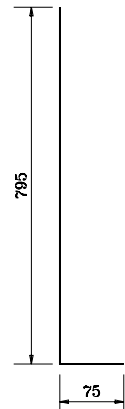
**Section B - B**



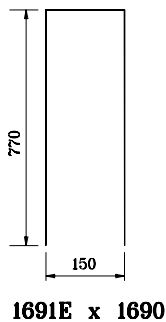
**Section C - C**

**NOTES:**

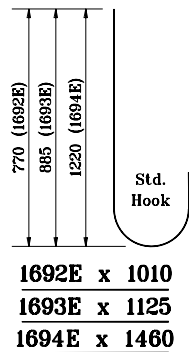
1. See Standard Drawing 703-BRST-01 for standard 180° bar bending detail.
2. All reinforcing bars designated "E" shall be epoxy coated.
3. Concrete in bridge railing transition to be class C.
4. See Standard Drawing 706-CBRT-02 for attachment of guardrail Type TGB.
5. See Standard Drawing 706-TASE-01, 02 & 05 for Bridge Railing Transition TBC Slab Extension.



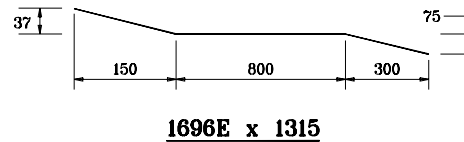
**1695E x 870**



**1691E x 1690**



**1692E x 1010**  
**1693E x 1125**  
**1694E x 1460**



**1696E x 1315**

All dimensions are in mm unless otherwise specified.

<b>INDIANA DEPARTMENT OF TRANSPORTATION</b>	
<b>CONCRETE BRIDGE RAILING</b>	
<b>TRANSITION, TPF-1</b>	
MAY 2000	
<b>STANDARD DRAWING NO. 706-TTBP-02</b>	
	/s/ Anthony L. Uremovich 5-01-00 <small>DESIGN STANDARDS ENGINEER DATE</small>
	/s/ Firooz Zandi 5-01-00 <small>CHIEF HIGHWAY ENGINEER DATE</small>
<small>DESIGN STANDARDS ENGINEER</small>	<small>DESIGN STANDARDS ENGINEER</small>