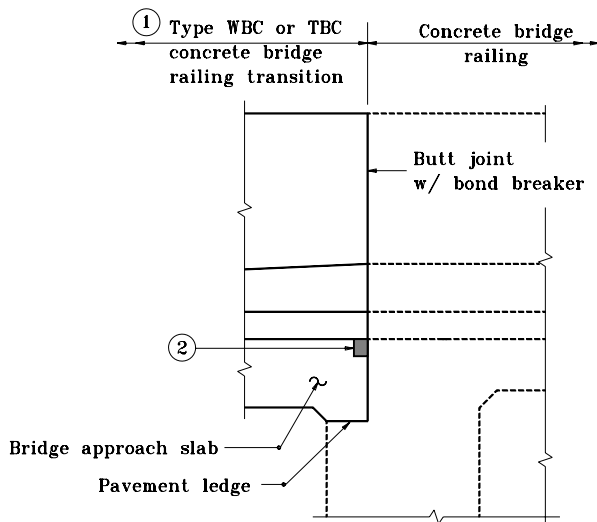


PART ELEVATION

SECTION D-D

NOTES :

DETAILS AT DECK EXPANSION JOINT



DETAIL AT INTEGRAL END BENT

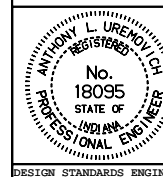
- ① See Standard Drawings 706-TWBC-01 through -03 for concrete bridge railing transition type WBC details. See Standard Drawings 706-TTBC-01 & -02 for concrete bridge railing transition type TBC details.
- ② See Standard Drawing 724-BJTS-01 for type IA joint details.
- ③ This section of railing is part of the concrete bridge railing and shall be billed with the concrete railing on the bridge. The minimum length of this section shall be equal to the thickness of the mudwall, but the actual length of this section will depend on the position of the concrete bridge railing transition type WBC or TBC along the bridge approach slab, and shall be as shown on the plans. See Standard Drawing 706-BCBR-01 for concrete bridge railing dimensions.

INDIANA DEPARTMENT OF TRANSPORTATION

**BRIDGE RAILING TRANSITION WBC
DETAILS AT END BENT**

MAY 2000

STANDARD DRAWING NO. **706-CBRT-01**



/s/ Anthony L. Uremovich 5-01-00
DESIGN STANDARDS ENGINEER DATE

/s/ Firooz Zandi 5-01-00
CHIEF HIGHWAY ENGINEER DATE

DESIGN STANDARDS ENGINEER