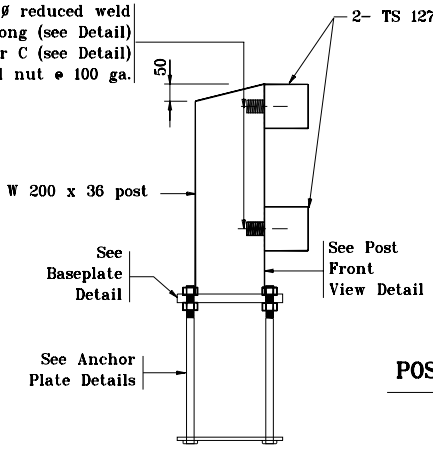
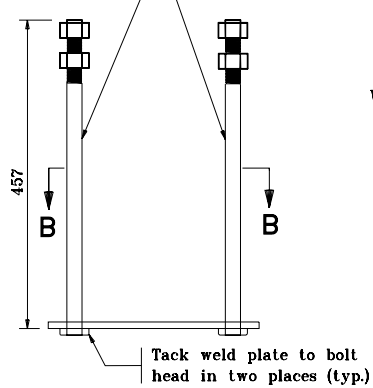


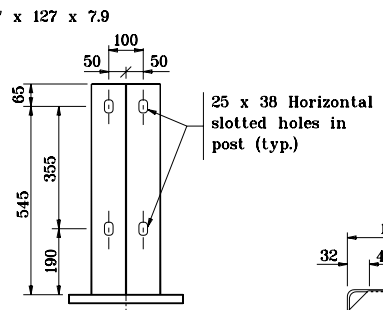
4 - 22  $\phi$  anchor bolts threaded 127 min. with 2 nuts and flat washers

2 - Threaded 19  $\phi$  reduced weld base stud x 51 long (see Detail) w/1- $\ell$  washer C (see Detail)

1 lock washer and nut  $\phi$  100 ga.



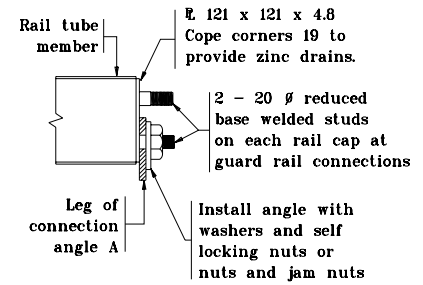
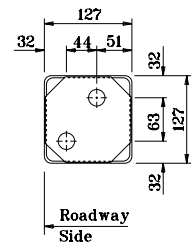
**SECTION A - A**  
Not to Scale



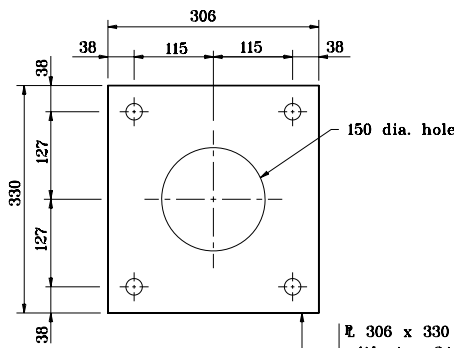
**POST FRONT VIEW DETAIL**  
Not to Scale

**NOTES :**

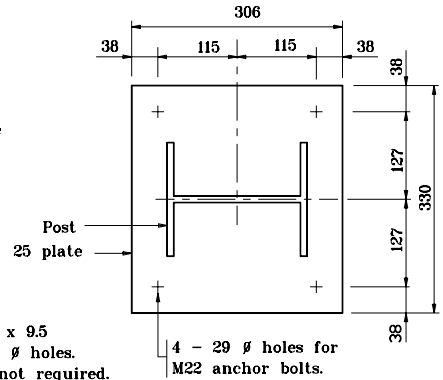
① Gap of 25 unless noted otherwise on plans. Railing splice required in panel with a deck expansion joint.



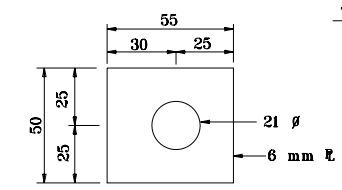
**RAILING CAP DETAIL**  
Not to Scale



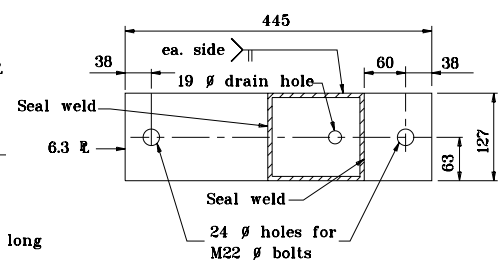
**SECTION B - B ANCHOR PLATE DETAILS**  
Not to Scale



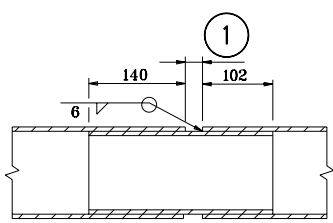
**BASE PLATE DETAILS**  
Not to Scale



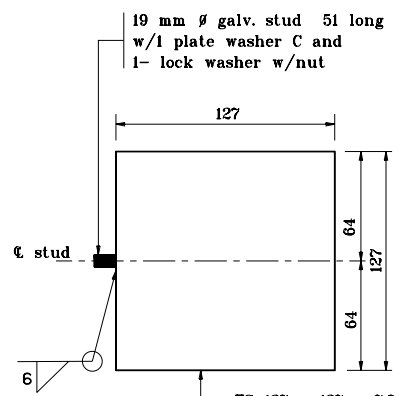
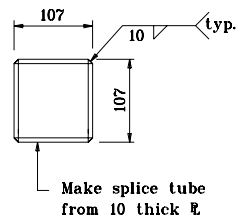
**PLATE WASHER C DETAIL**  
Not to Scale



**TOP RAILING END VIEW B - B**  
Not to Scale



**RAILING SPLICE DETAILS**  
Not to Scale



**BASE WELD STUD DETAIL**  
Not to Scale

All dimensions are in mm unless otherwise specified.

INDIANA DEPARTMENT OF TRANSPORTATION

**RAILING, CF-1**

SEPTEMBER 2001

STANDARD DRAWING NO. 706-BRTM-02

	/s/ Anthony L. Uremovich 9-04-01 DESIGN STANDARDS ENGINEER DATE
	/s/ Firooz Zandi 9-04-01 CHIEF HIGHWAY ENGINEER DATE

DESIGN STANDARDS ENGINEER