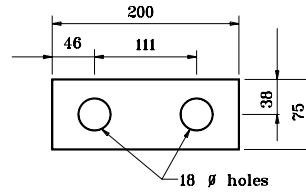


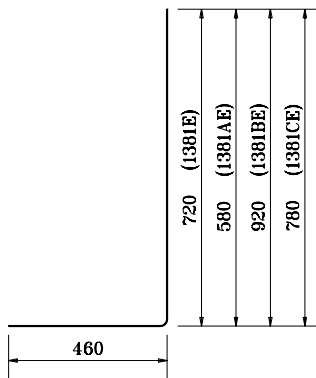
BASE PLATE DETAIL



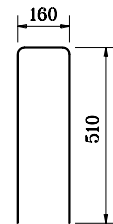
BEARING PLATE DETAIL

NOTES:

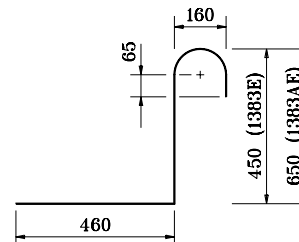
1. See Standard Drawing 703-BRST-01 for standard 180° bar bending details.
2. All reinforcing bars designated "E" shall be epoxy coated.



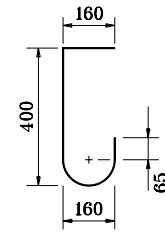
- 1381E x 1180
- 1381AE x 1040
- 1381BE x 1380
- 1381CE x 1240



1382E x 1180



1383E x 1160
1383AE x 1360



1384E x 800

All dimensions are in mm unless otherwise specified.

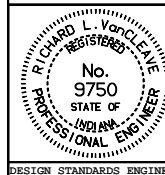
INDIANA DEPARTMENT OF TRANSPORTATION

RAILING, PF & PS

DETAILS

MARCH 2002

STANDARD DRAWING NO. **706-BRPP-06**



/s/ Richard L. VanCleave 3-01-02
DESIGN STANDARDS ENGINEER DATE

/s/ Richard K. Smutzer 3-01-02
CHIEF HIGHWAY ENGINEER DATE

DESIGN STANDARDS ENGINEER