

ELEVATION

Scale: None

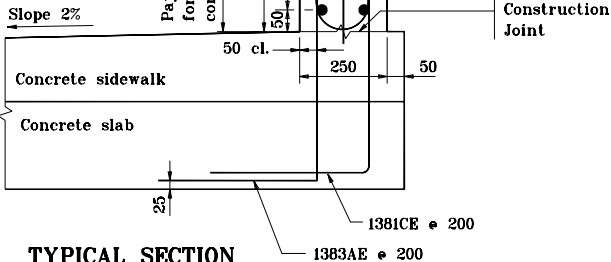
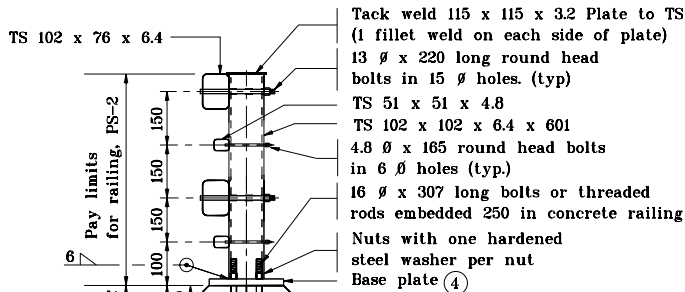
NOTES :

1. All chamfered edges shall be 25.
2. Intermediate railing splices shall be placed every 6 m with connection at span quarter points.
3. See Standard Drawing 706-BRPP-05 for railing tube details and inner sleeve details.
- ④ See Standard Drawing 706-BRPP-06 for base plate detail and reinforcing steel bar bends.
5. See Standard Drawing 706-TTBP-07, -08 for Concrete Bridge Railing Transition, TPS-2.
6. See Standard Drawing 703-BRST-01 for standard 180° bar bending details.
7. All reinforcing bars designated "E" shall be epoxy coated.
8. Reinforcing steel in sidewalk shall match that shown on the bridge plans.

8 - 13 ϕ x 320 long round head bolts in 15 ϕ holes. (4 ea. rail)
Holes are to be slotted as required for expansion.

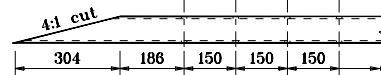
8 - 4.8 ϕ x 300 long round head bolts in 6 ϕ holes. (4 ea. rail)
Holes are to be slotted as required for expansion.

*Field measure distance to holes on concrete transition.



TYPICAL SECTION

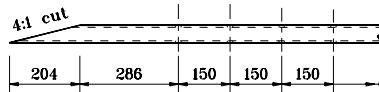
Scale: None



DETAIL A

(Plan view of larger railing tubes)

Scale: None



DETAIL A

(Plan view of smaller railing tubes)

Scale: None

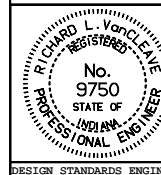
All dimensions are in mm unless otherwise specified.

INDIANA DEPARTMENT OF TRANSPORTATION

RAILING, PS-2

MARCH 2002

STANDARD DRAWING NO. 706-BRPP-04



/s/ Richard L. VanCleave 3-01-02
DESIGN STANDARDS ENGINEER DATE

/s/ Richard K. Smutzer 3-01-02
CHIEF HIGHWAY ENGINEER DATE

DESIGN STANDARDS ENGINEER