

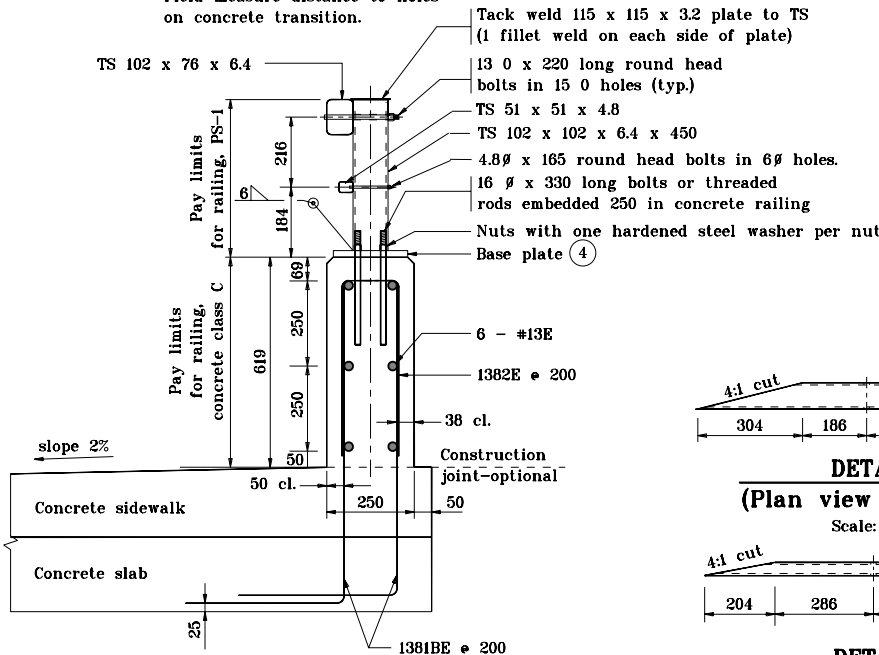
**ELEVATION**

Scale: None

4 - 13  $\phi$  x 320 long round head bolts in 15  $\phi$  holes. (top rail)  
Holes are to be slotted as required for expansion.

4 - 4.8  $\phi$  x 300 long round head bolts in 6  $\phi$  holes. (bottom rail)  
Holes are to be slotted as required for expansion.

\*Field measure distance to holes on concrete transition.

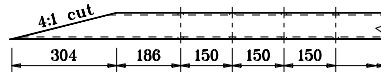


**TYPICAL SECTION**

Scale: None

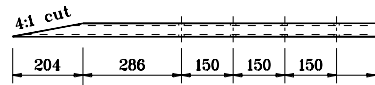
**NOTES :**

1. All chamfered edges shall be 25.
2. Intermediate railing splices shall be placed every 6 m with center of connection at span quarter points.
3. See Standard Drawing 706-BRPP-05 for railing tube details and Inner sleeve details.
4. See Standard Drawing 706-BRPP-06 for base plate detail and reinforcing steel bar bends.
5. See Standard Drawing 706-TTBP-05, 06 for Concrete Bridge Railing Transition, TPS-1.
6. See Standard Drawing 703-BRST-01 for standard 180° bar bending details.
7. All reinforcing bars designated "E" shall be epoxy coated.
8. Reinforcing steel in sidewalk shall match that shown on the bridge plans.



**DETAIL A**  
**(Plan view of top rail)**

Scale: None



**DETAIL A**  
**(Plan view of bottom rail)**

Scale: None

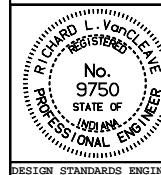
All dimensions are in mm unless otherwise specified.

INDIANA DEPARTMENT OF TRANSPORTATION

**RAILING, PS-1**

MARCH 2002

STANDARD DRAWING NO. **706-BRPP-03**



/s/ Richard L. VanCleave 3-01-02  
DESIGN STANDARDS ENGINEER DATE

/s/ Richard K. Smutzer 3-01-02  
CHIEF HIGHWAY ENGINEER DATE

DESIGN STANDARDS ENGINEER