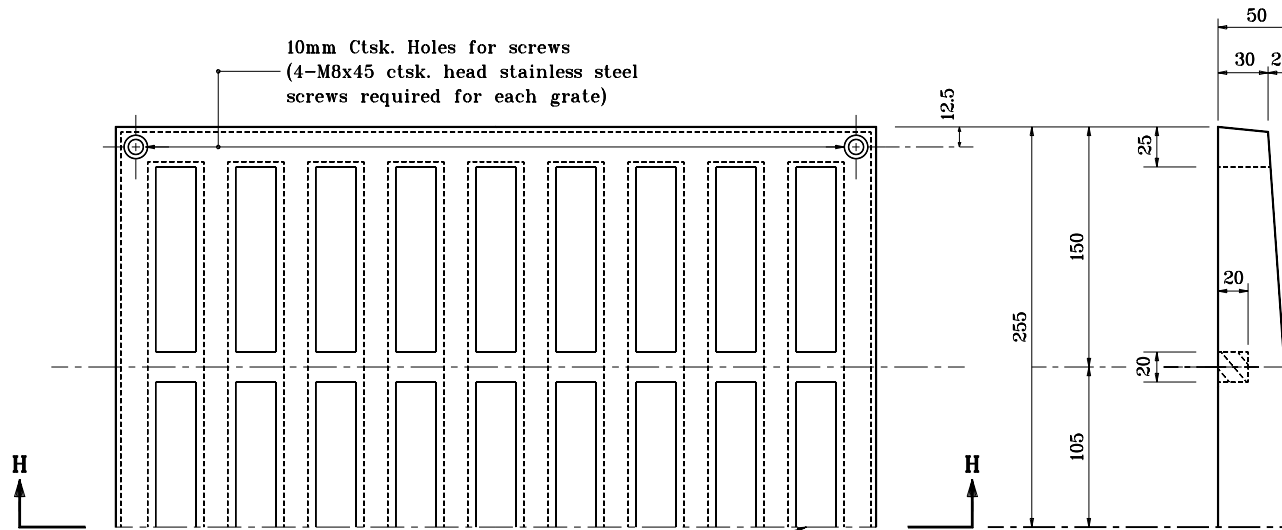


GENERAL NOTES

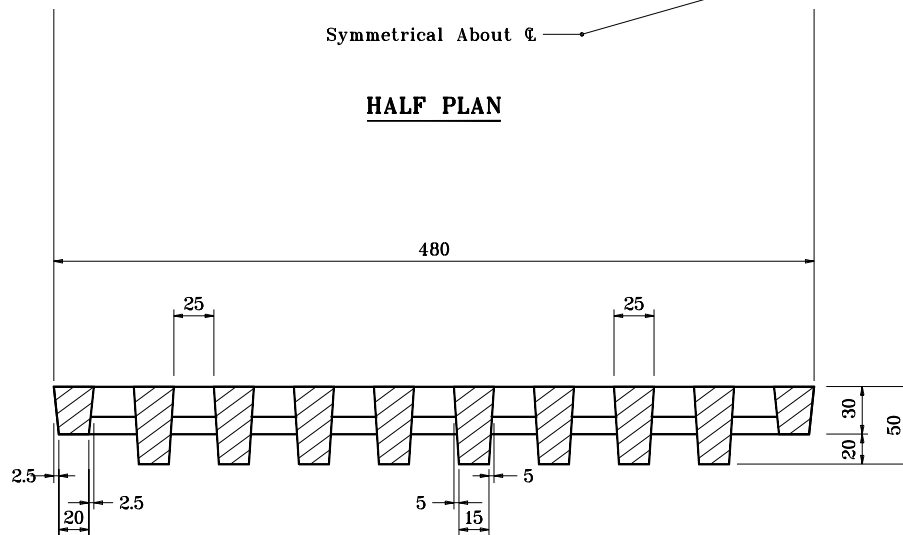
1. Fit grate to box in shop and ship in place.
2. This grate is used with Roadway Drain Type OS and weighs approximately 36.3 kg.



10mm Ctsk. Holes for screws
(4-M8x45 ctsk. head stainless steel screws required for each grate)

Symmetrical About ϕ

HALF PLAN



SECTION H-H

All dimensions are in mm unless otherwise specified.

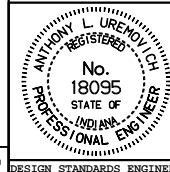
INDIANA DEPARTMENT OF TRANSPORTATION

CASTING DETAILS

GRATE D

SEPTEMBER 1994

STANDARD DRAWING NO. 704-BDCG-02



/s/ Anthony L. Uremovich 9-30-94
DESIGN STANDARDS ENGINEER DATE

/s/ Donald W. Lucas 9-30-94
CHIEF HIGHWAY ENGINEER DATE

Source Sheet: **D**

DESIGN STANDARDS ENGINEER