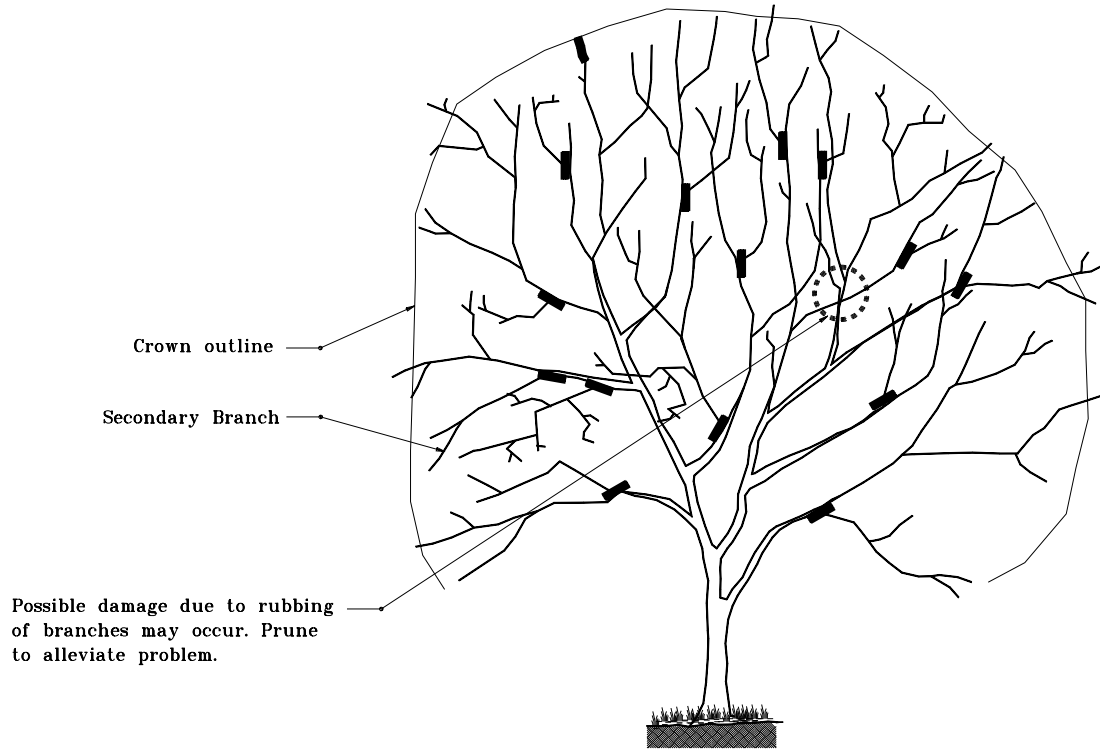


GENERAL NOTES

1. Pruning cuts shall be made as close as possible to remaining branch and in direction of symbol for cuts (■).
2. Cut back secondary branching to reduce foliage by a minimum of 1/3 to a maximum of 1/2.



Possible damage due to rubbing of branches may occur. Prune to alleviate problem.

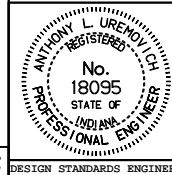
All dimensions are in mm unless otherwise specified.

INDIANA DEPARTMENT OF TRANSPORTATION

**TREE PRUNING
INTERMEDIATE TREE-ONE STEM**

APRIL 1995

STANDARD DRAWING NO. **622-LSPR-02**



/s/ Anthony L. Uremovich 4-03-95
DESIGN STANDARDS ENGINEER DATE

/s/ Donald W. Lucas 4-03-95
CHIEF HIGHWAY ENGINEER DATE

Source Sheet: **LS-2**

DESIGN STANDARDS ENGINEER