

GENERAL NOTES

1. Take specified mulch depth to edge of bed over 900 distance from center of outer plant.
2. See Standard Drawing 622-LSPL-10 for typical plan of shrub bed.

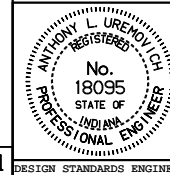
All dimensions are in mm unless otherwise specified.

INDIANA DEPARTMENT OF TRANSPORTATION

**TYPICAL SECTION
OF SHRUB BED**

APRIL 1995

STANDARD DRAWING NO. **622-LSPL-08**



/s/ Anthony L. Uremovich 4-03-95
DESIGN STANDARDS ENGINEER DATE

/s/ Donald W. Lucas 4-03-95
CHIEF HIGHWAY ENGINEER DATE

Source Sheet: **LS-1**

DESIGN STANDARDS ENGINEER