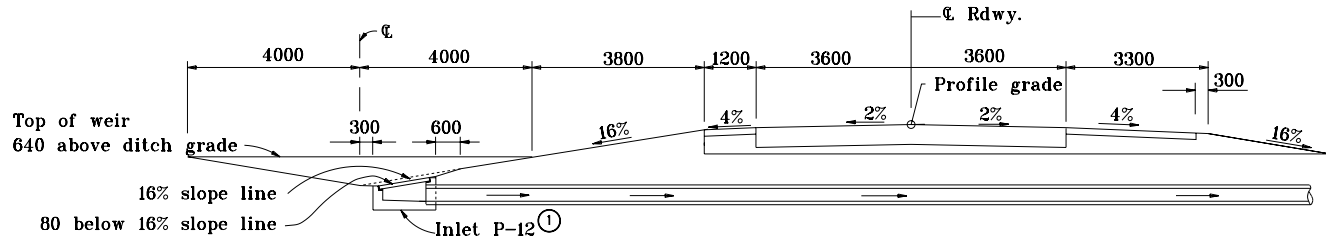
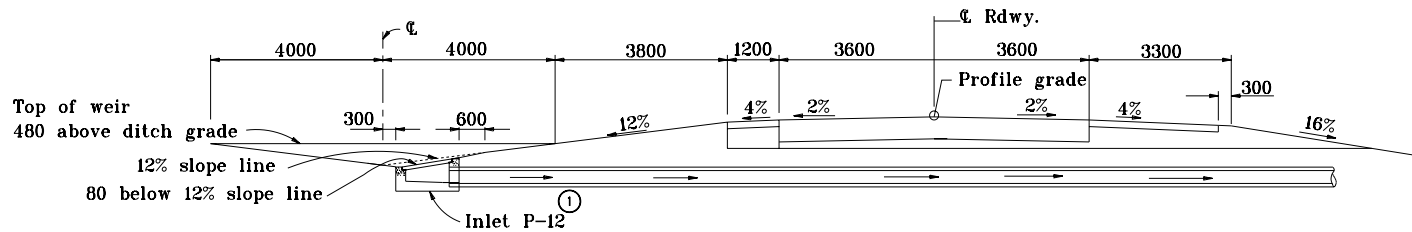


GENERAL NOTES

① See Standard drawing 720-INST-09 for inlet type P-12 details.



USE WITH MEDIAN SLOPE OF 16%



USE WITH MEDIAN SLOPE OF 12%

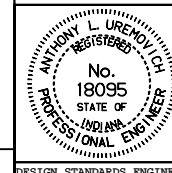
All dimensions are in mm unless otherwise specified.

INDIANA DEPARTMENT OF TRANSPORTATION

**CENTER DITCH INLET
PERPENDICULAR TO C ROADWAY**

MAY 1998

STANDARD DRAWING NO. 617-CDIN-04



/s/ Anthony L. Uremovich 5-01-98
DESIGN STANDARDS ENGINEER DATE

/s/ Donald W. Lucas 5-01-98
CHIEF HIGHWAY ENGINEER DATE

Source Sheet: MSI

DESIGN STANDARDS ENGINEER