

Bench mark tablet furnished by the Department and set in cement grout.

Ground line

4-#16 x 1500 set 50 from face

Class A concrete

Class A concrete

Variable

150 min.

1800

600

150 min.

BENCH MARK POST

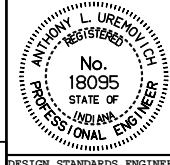
All dimensions are in mm unless otherwise specified.

INDIANA DEPARTMENT OF TRANSPORTATION

BENCH MARK POST

SEPTEMBER 1997

STANDARD DRAWING NO. **615-SLBM-01**



/s/ Anthony L. Uremovich 9-01-97
DESIGN STANDARDS ENGINEER DATE

/s/ Donald W. Lucas 9-01-97
CHIEF HIGHWAY ENGINEER DATE

Source Sheet: **MA1**

DESIGN STANDARDS ENGINEER