

**EXAMPLE FOR TYPE C, W = 7.2 m**

Intersection control angle  $\theta = 100^\circ$

L = 26.37 m

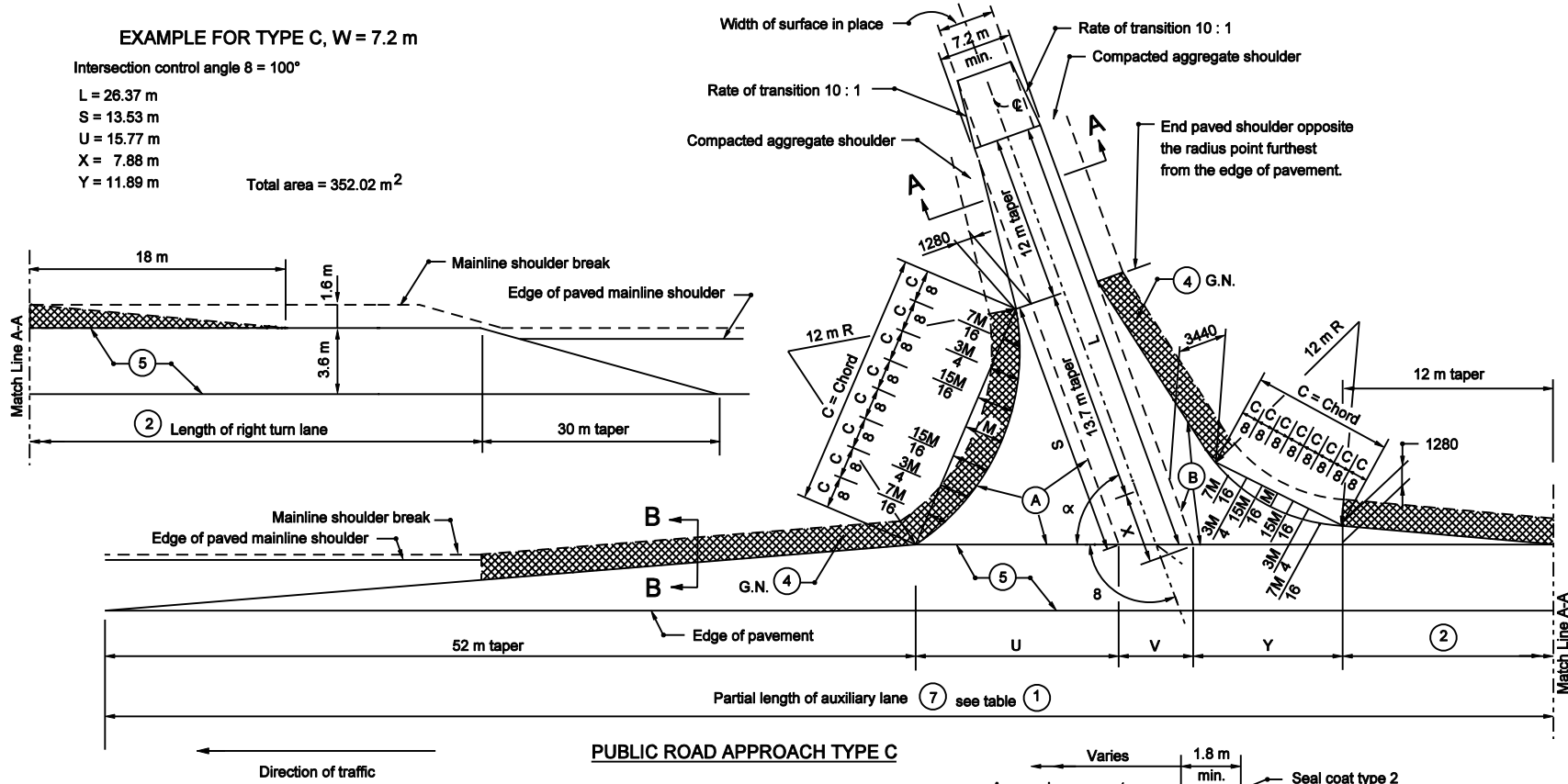
S = 13.53 m

U = 15.77 m

X = 7.88 m

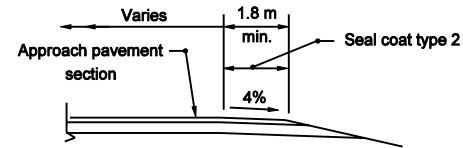
Y = 11.89 m

Total area = 352.02 m<sup>2</sup>

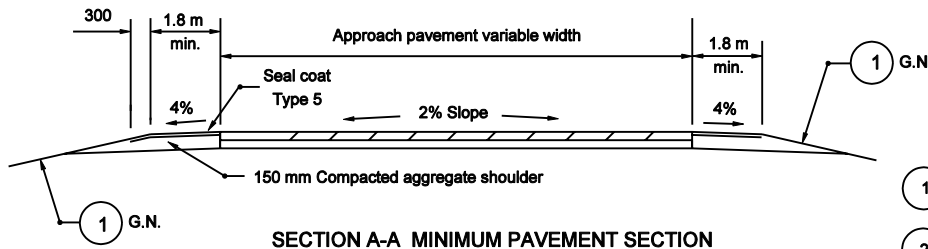


**PUBLIC ROAD APPROACH TYPE C**

Direction of traffic



**SECTION B-B**



**SECTION A-A MINIMUM PAVEMENT SECTION**

For ADT  $\leq$  1000

90 kg/m<sup>2</sup> HMA Surface Type A on

150 kg/m<sup>2</sup> HMA Intermediate Type A on

200 mm compacted aggregate base #53

**NOTES :**

- 1 See Standard Drawing 610-PRAP-09 for table with computed values.
- 2 See Standard Drawing 610-PRAP-11 for Table A.
- 3 See Standard Drawing 610-PRAP-08 for General Notes and pay limits.
- 4 G.N. - See General Notes

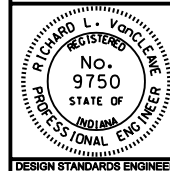
All Dimension are in mm unless otherwise specified

INDIANA DEPARTMENT OF TRANSPORTATION

**PUBLIC ROAD APPROACH TYPE C**

SEPTEMBER 2003

STANDARD DRAWING NO. 610-PRAP-06



/s/ Richard L. VanCleave 9-02-03  
DESIGN STANDARDS ENGINEER DATE

/s/ Richard K. Smutzer 9-02-03  
CHIEF HIGHWAY ENGINEER DATE

DESIGN STANDARDS ENGINEER