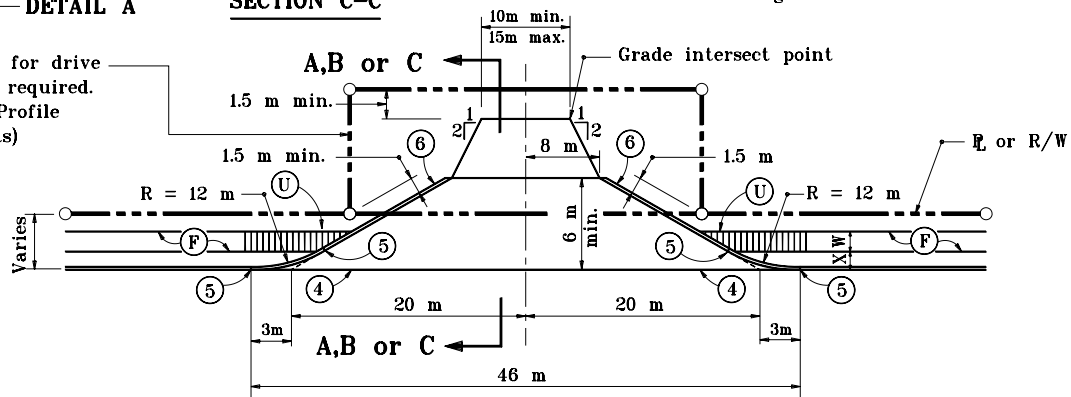


Temporary R/W for drive construction if required. (See Plan and Profile sheets for limits)



CLASS VII DRIVE (COMMERCIAL)

NOTES :

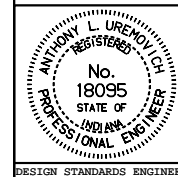
1. The Class VII drive shall be specified at truck stops and entrances to heavy industrial property.
2. All Class VII drives shall be concrete to at least the Right-of-Way line with minimum length 6 m.
3. See Standard Drawing 610-DRIV-16 for keyway joint shown in Detail A and for joint placement and corner reinforcement.
4. See Standard Drawing 610-DRIV-14 for General Notes and Legend.

All dimensions are in mm unless otherwise specified.

INDIANA DEPARTMENT OF TRANSPORTATION

CLASS VII DRIVE
PLAN AND PROFILE GRADE
JANUARY 2000

STANDARD DRAWING NO. 610-DRIV-15



/s/ Anthony L. Uremovich 1-03-00
DESIGN STANDARDS ENGINEER DATE

/s/ Firooz Zandi 1-03-00
CHIEF HIGHWAY ENGINEER DATE

DESIGN STANDARDS ENGINEER