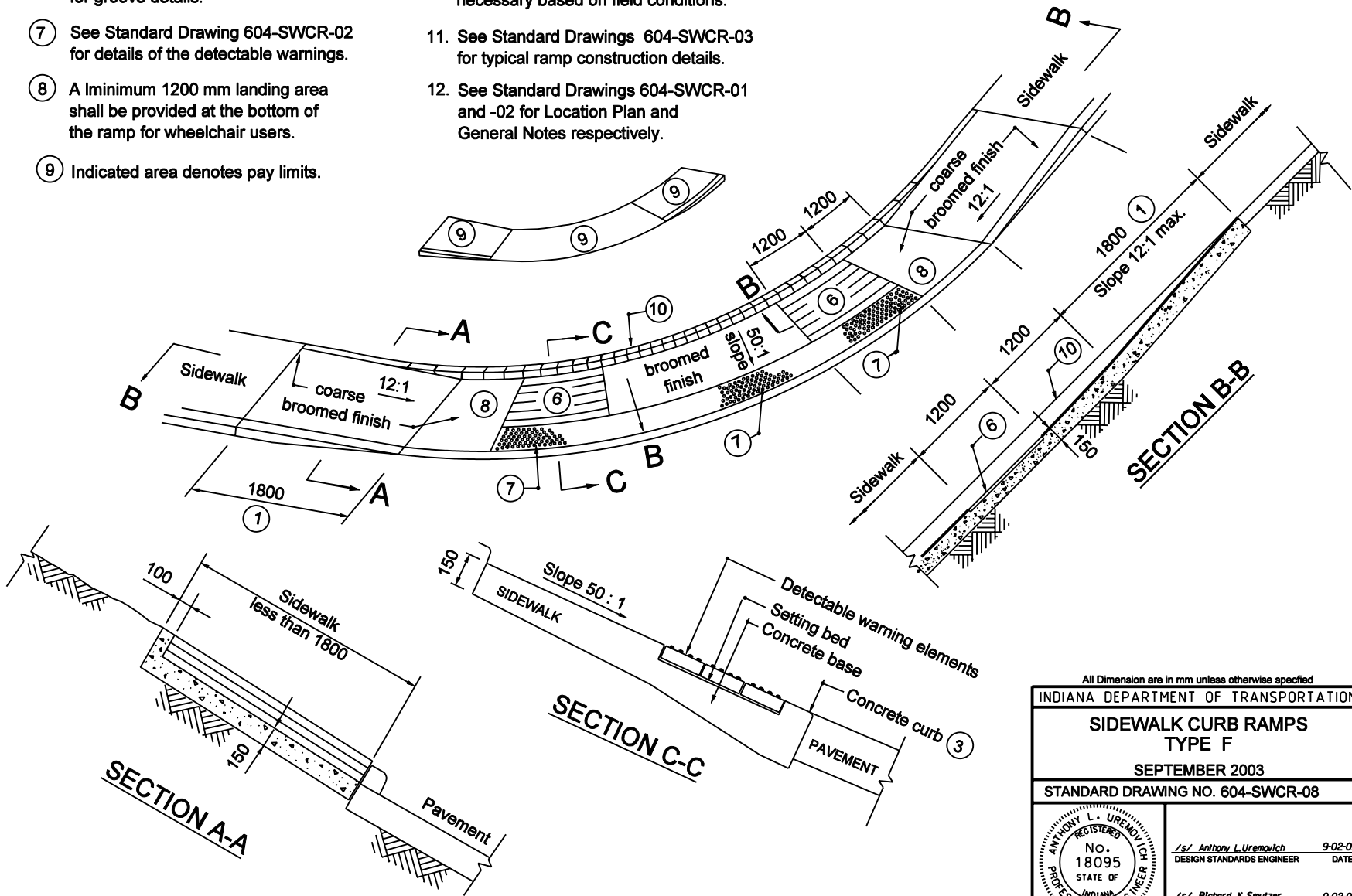


NOTES :

- ⑥ See Standard Drawing 604-SWCR-02 for groove details.
- ⑦ See Standard Drawing 604-SWCR-02 for details of the detectable warnings.
- ⑧ A minimum 1200 mm landing area shall be provided at the bottom of the ramp for wheelchair users.
- ⑨ Indicated area denotes pay limits.
- ⑩ Curb or wall shall be used when necessary based on field conditions.
- 11. See Standard Drawings 604-SWCR-03 for typical ramp construction details.
- 12. See Standard Drawings 604-SWCR-01 and -02 for Location Plan and General Notes respectively.



All Dimension are in mm unless otherwise specified

INDIANA DEPARTMENT OF TRANSPORTATION

**SIDEWALK CURB RAMPS
TYPE F**

SEPTEMBER 2003

STANDARD DRAWING NO. 604-SWCR-08

	/s/ Anthony L. Uremovich	9-02-03
	DESIGN STANDARDS ENGINEER	DATE
	/s/ Richard K. Smutzer	9-02-03
	CHIEF HIGHWAY ENGINEER	DATE

DESIGN STANDARDS ENGINEER