

2 - 24  $\phi$  holes through each rail tube. Extend through both top and bottom faces of tube.

Connection/  
Deflector  
Plate

$\phi$  End rail post  
End of R.C. end panel

Thrie beam  
terminal connector

5936 Limits of guardrail transition, TGT

1175 2700 R 3 spa. @ 952 = 2856 1905

200 x 200 timber posts (typ.)  
200 x 200 timber blocks (typ.)

8" wide conc. curb

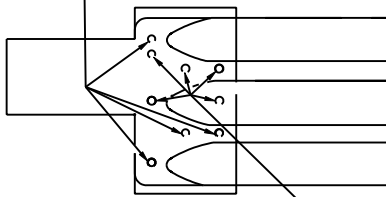
Two 2127 sections of thrie beam,  
one set inside the other

W-thrie beam transition rail  
sections (2- 12 ga. elements)

W-beam rail section

PLAN

Four-M22 x 25 std. button head bolts, with rectangular plate washers, round washers, and recess nuts through rail sections.



Drill and tap 5 holes for M22 x 32 std. button head bolts, with rectangular plate washers, round washers, and recess nuts through rail sections

DETAIL A

Two-M16 x 50 std. button head bolts, with rectangular plate washers, round washers, and recess nuts through rail sections at each post

Twelve-M16 x 50 std. button head bolts with round washers and recess nuts at 2 posts

Two-M16 x 30 std. button head bolts with rectangular plate washers, round washers, and recess nuts at each post

One-M16 x 30 std. button head bolt with rectangular plate washer, round washer, and recess nut at each post

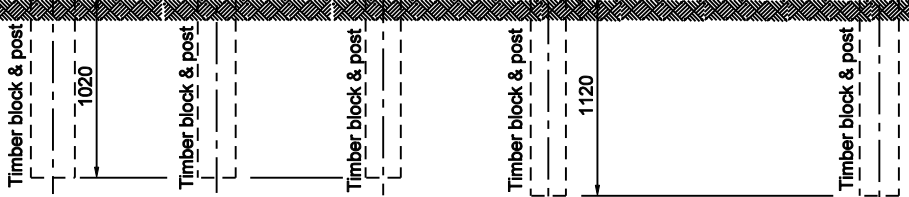
Eight-M16 x 30 std. button head bolts with round washers and recess nuts

Connection/  
Deflector  
Plate

DETAIL A

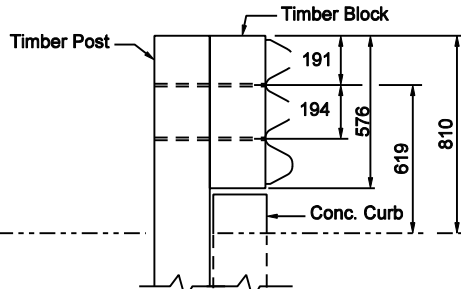
B

W-beam  
back-up plate



B

ELEVATION



SECTION B - B

NOTES:

1. See Standard Drawing E 601-TBGC-01 and E 601-TBGC-02 for thrie beam transition details.
2. See Standard Drawing E 601-TTGT-02 for transition connection detail, timber post detail and timber block detail.

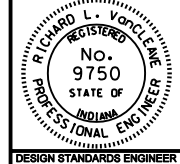
All Dimension are in mm unless otherwise specified

INDIANA DEPARTMENT OF TRANSPORTATION

GUARDRAIL TRANSITION, TGT

SEPTEMBER 2003

STANDARD DRAWING NO. 601-TTGT-01



/s/ Richard L. VanCleave 9-02-03  
DESIGN STANDARDS ENGINEER DATE

/s/ Richard K. Smutzer 9-02-03  
CHIEF HIGHWAY ENGINEER DATE

DESIGN STANDARDS ENGINEER