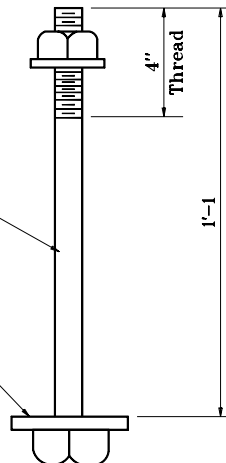


**603 x 8'-11**

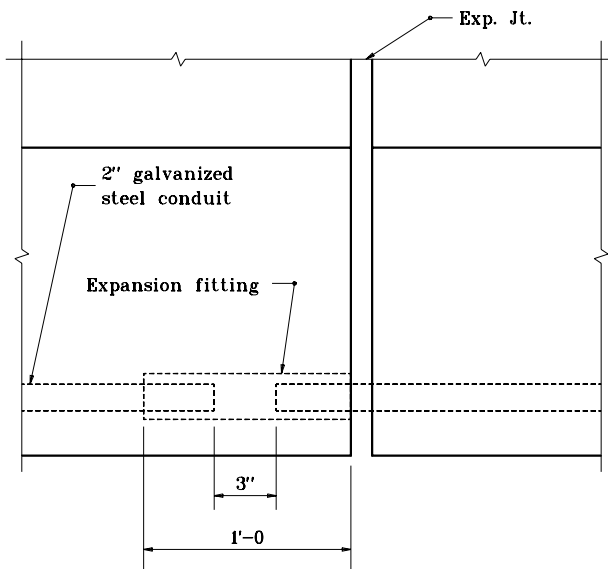
1" x 1'-1 bolt (with square head, hex nut & cut washer)

Ø 4"x 4" x 1/4"

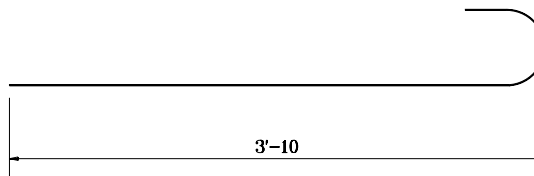


Galvanize thread, hex nut & cut washer.

**ANCHOR BOLT AR-22**



**EXPANSION SLEEVE**



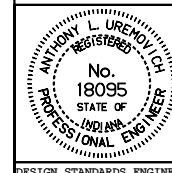
**602 x 4'-8**

INDIANA DEPARTMENT OF TRANSPORTATION

**BRIDGE LIGHTING DETAILS**

SEPTEMBER 1997

STANDARD DRAWING NO. **E 807-BLIT-03**



DETAILS PLACED IN THIS FORMAT 11-15-99

/s/ Anthony L. Uremovich 11-15-99  
DESIGN STANDARDS ENGINEER DATE

/s/ Firooz Zandi 11-15-99  
CHIEF HIGHWAY ENGINEER DATE

DESIGN STANDARDS ENGINEER

ORIGINALLY APPROVED 9-01-97