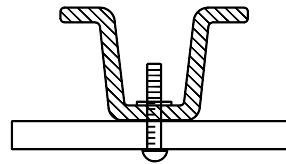
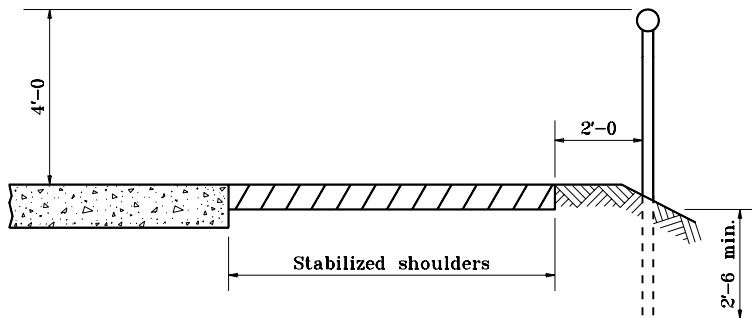


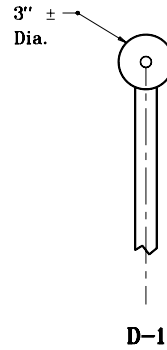
UNMOUNTABLE CURB SECTION



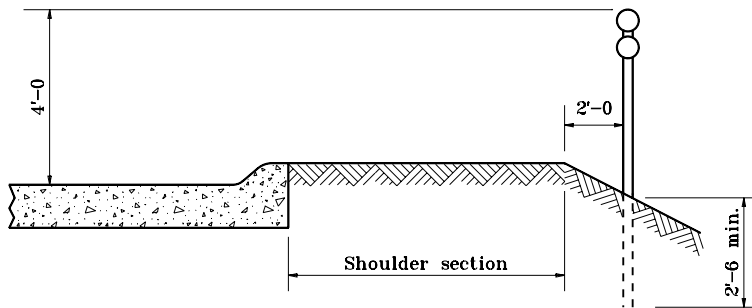
MOUNTING DETAIL



SHOULDER SECTION



D-1



MOUNTABLE CURB SECTION

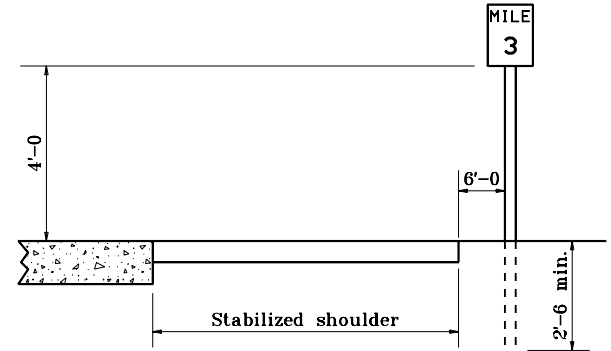


D-2

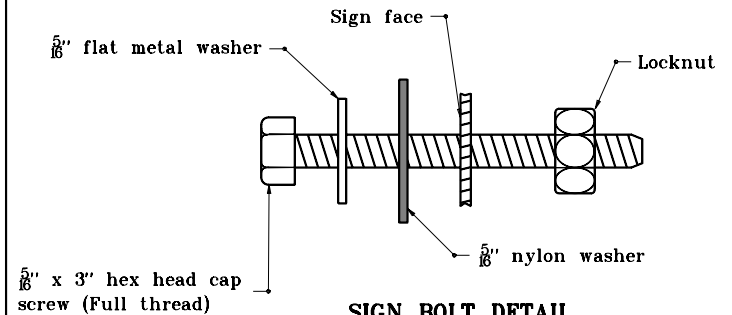
DELINEATOR DETAILS

GENERAL NOTES

1. Post to be type A flange posts.
2. Mileposts shall be installed in accordance with Interstate Sign Manual.



TYPICAL MILE or REFERENCE POST



SIGN BOLT DETAIL

INDIANA DEPARTMENT OF TRANSPORTATION

MISC. SIGN DETAILS

MARCH 1995

STANDARD DRAWING NO. E 802-SNGS-07

	DETAILS PLACED IN THIS FORMAT 11-15-99
	/s/ Anthony L. Uremovich 11-15-99 DESIGN STANDARDS ENGINEER DATE
	/s/ Firooz Zandi 11-15-99 CHIEF HIGHWAY ENGINEER DATE
DESIGN STANDARDS ENGINEER	ORIGINALLY APPROVED 3-01-95