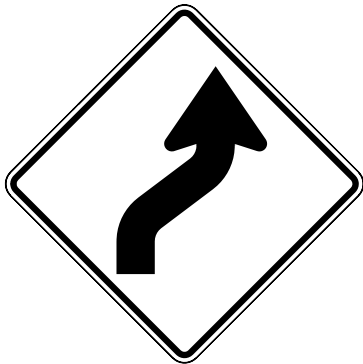
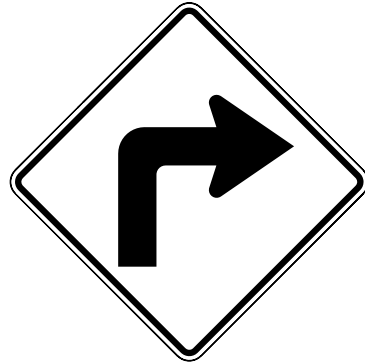


GENERAL NOTES

① See Standard Drawing E 801-TCSN-11 for additional general notes.



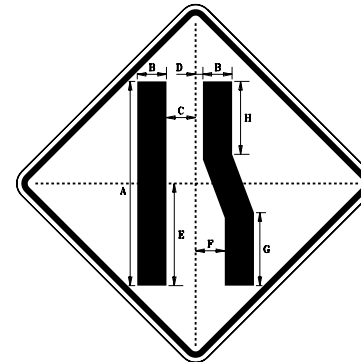
XW1-4-A (R or L) ①
XW1-4-B (R or L) ①



XW1-1-A (R or L) ①
XW1-1-B (R or L) ①

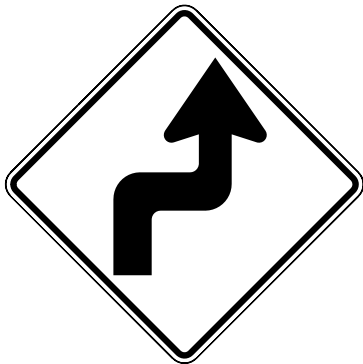


R3-2a ①
R3-2c ①

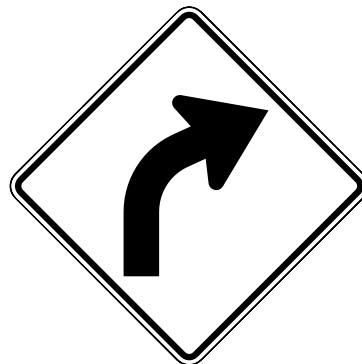


XW4-2 (R or L) ①
XW4-2-A (R or L) ①

LANE ENDS		
	XW4-2	XW4-2-A
A	28	37
B	4	5 5/16
C	4	5 1/16
D	1	1 3/8
E	14	16 5/8
F	4	5 5/16
G	10	13 5/16
H	10	13 5/16



XW1-3-A (R or L) ①
XW1-3-B (R or L) ①



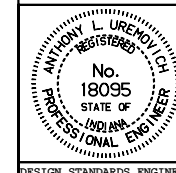
XW1-2-A (R or L) ①
XW1-2-B (R or L) ①

INDIANA DEPARTMENT OF TRANSPORTATION

**TRAFFIC CONTROL
SIGNS**

SEPTEMBER 1997

STANDARD DRAWING NO. E 801-TCSN-05



DETAILS PLACED IN THIS FORMAT 11-15-99

/s/ Anthony L. Uremovich 11-15-99
DESIGN STANDARDS ENGINEER DATE

/s/ Firooz Zandi 11-15-99
CHIEF HIGHWAY ENGINEER DATE

DESIGN STANDARDS ENGINEER

ORIGINALLY APPROVED 9-02-97