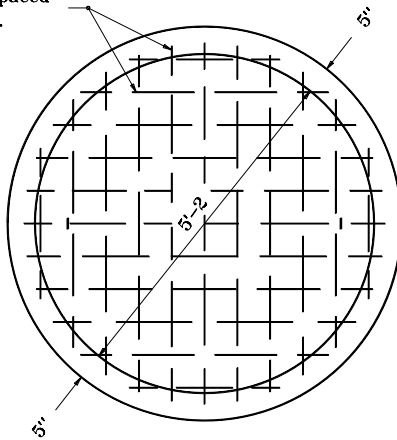
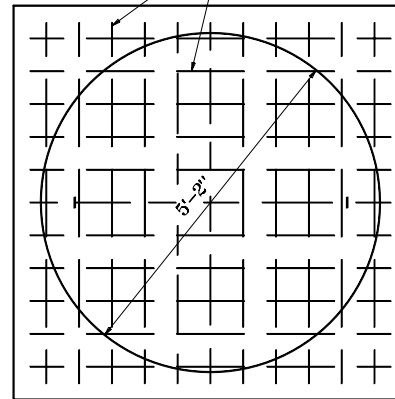


#4 bars spaced  
6" c. to c.



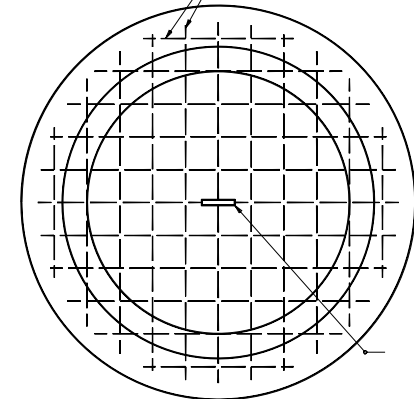
**ROUND**

#4 x 5'-6"  
spaced 6' c. to c.



**SQUARE**

Pipe mesh-welded wire  
fabric (W-12 min.)



Lifting ring

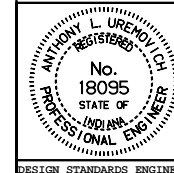
**ROUND ALTERNATE**

INDIANA DEPARTMENT OF TRANSPORTATION

**PRECAST MANHOLE  
BOTTOM SECTION**

SEPTEMBER 1997

STANDARD DRAWING NO. **E 720-MHST-07**



DETAILS PLACED IN THIS FORMAT 11-15-99

/s/ Anthony L. Uremovich 11-15-99  
DESIGN STANDARDS ENGINEER DATE

/s/ Firooz Zandi 11-15-99  
CHIEF HIGHWAY ENGINEER DATE

DESIGN STANDARDS ENGINEER

ORIGINALLY APPROVED 9-01-97