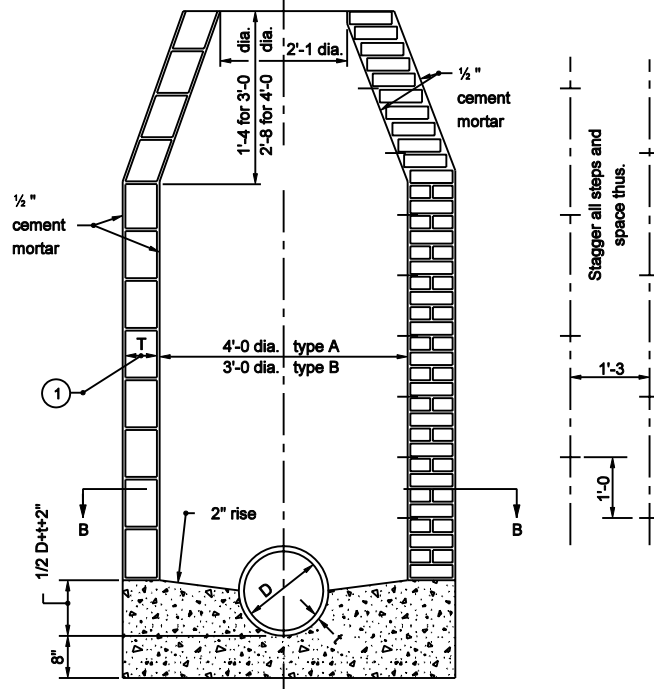


SECTION B-B



TYPE A  
Dia. = 4'-0"

SECTION A-A

TYPE B  
Dia. = 3'-0"

**NOTES**

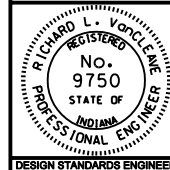
- ① T = 8" for brick structure  
T = 6" for segmental block structure

INDIANA DEPARTMENT OF TRANSPORTATION

**MANHOLES TYPE A AND B**

SEPTEMBER 2003

STANDARD DRAWING NO. E 720-MHST-01



/s/ Richard L. VanCleave 9-02-03  
DESIGN STANDARDS ENGINEER DATE

/s/ Richard K. Smutzer 9-02-03  
CHIEF HIGHWAY ENGINEER DATE

DESIGN STANDARDS ENGINEER