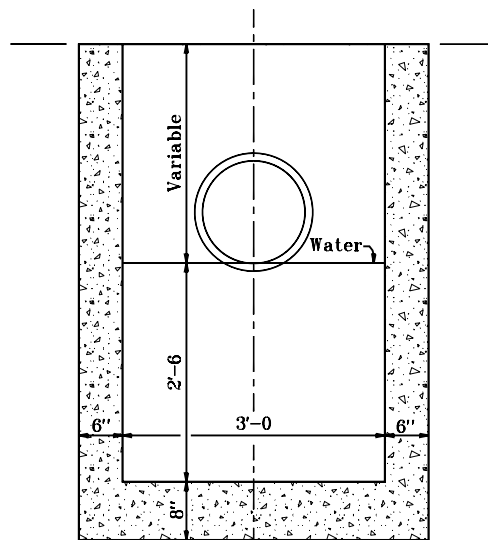


**SECTION A-A**



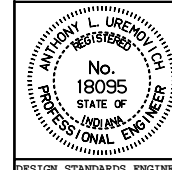
**SECTION B-B**

INDIANA DEPARTMENT OF TRANSPORTATION

**CATCH BASIN  
TYPE K**

APRIL 1995

STANDARD DRAWING NO. E 720-CBST-05



DETAILS PLACED IN THIS FORMAT 11-15-99

/s/ Anthony L. Uremovich 11-15-99  
DESIGN STANDARDS ENGINEER DATE

/s/ Firooz Zandi 11-15-99  
CHIEF HIGHWAY ENGINEER DATE

DESIGN STANDARDS ENGINEER

ORIGINALLY APPROVED 4-03-95