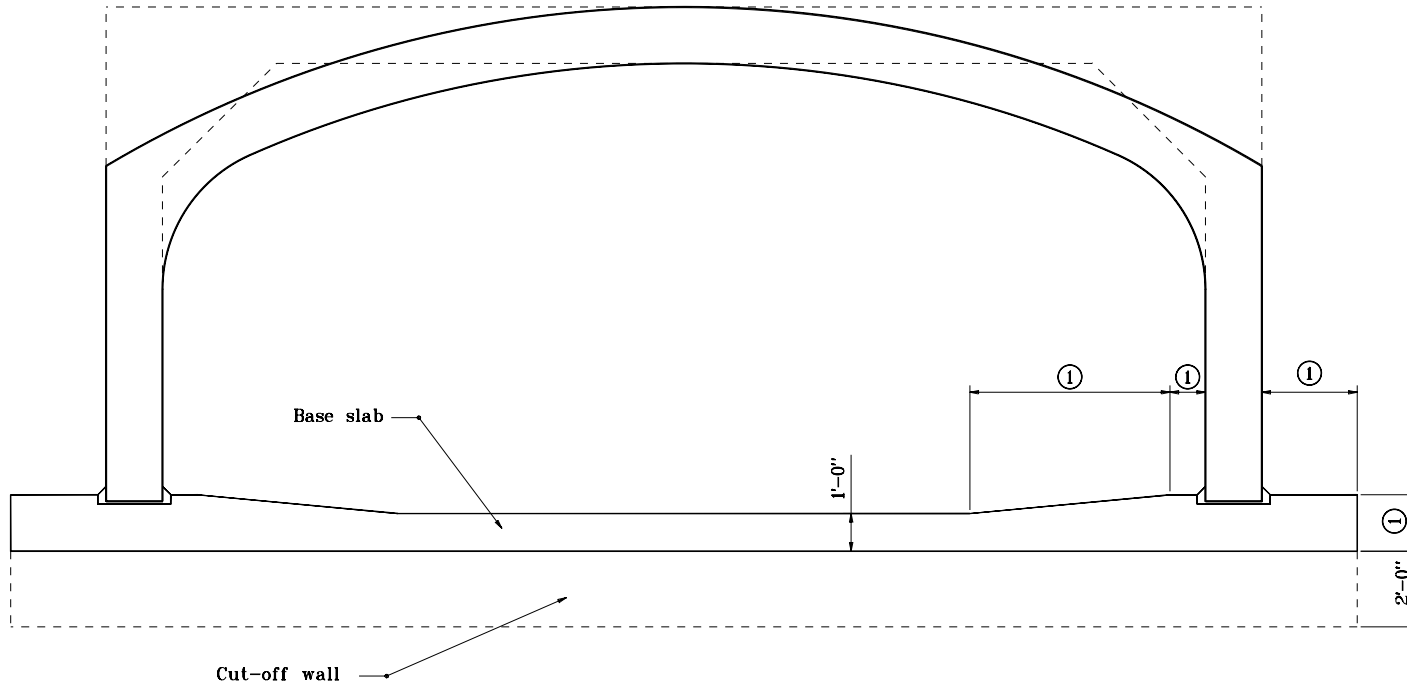


NOTES:

- ① These dimensions vary, depending on the footing design, and are shown on the plans.



SECTION B-B

BASE SLAB METHOD

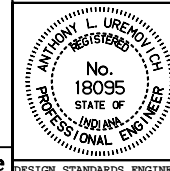
For Span Width of Less Than 10'-0"

INDIANA DEPARTMENT OF TRANSPORTATION

**THREE SIDED CONCRETE CULVERT
SCOUR PROTECTION**

JANUARY 1999

STANDARD DRAWING NO. E 714-CCSP-05



/s/ Anthony L. Uremovich 1-04-99
DESIGN STANDARDS ENGINEER DATE

/s/ Donald W. Lucas 1-04-99
CHIEF HIGHWAY ENGINEER DATE

Source Sheet: None