

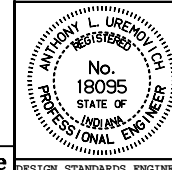
**SECTION A-A**

**RIPRAP METHOD**

**For Span Width from 10'-0"  
to Less Than 20'-0"**

INDIANA DEPARTMENT OF TRANSPORTATION  
**THREE SIDED CONCRETE CULVERT  
 SCOUR PROTECTION**  
 JANUARY 1999

STANDARD DRAWING NO. E 714-CCSP-03



/s/ Anthony L. Uremovich 1-04-99  
 DESIGN STANDARDS ENGINEER DATE

/s/ Donald W. Lucas 1-04-99  
 CHIEF HIGHWAY ENGINEER DATE

Source Sheet: None