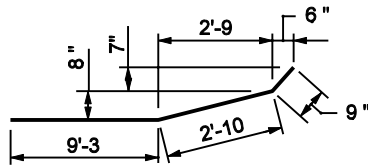
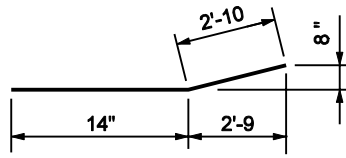


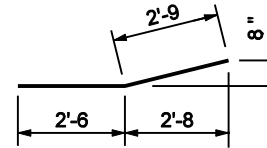
580 x 3'-9



586 x 12'-10



587 x 16'-10



588 x 5'-3

BILL OF MATERIALS

These quantities are for one concrete bridge railing transition type WGB. The concrete quantity is provided for information only and is not the pay item.

EPOXY COATED REINFORCING STEEL

Size & type	No. of Bars	Length ft-in	Weight lb
580	68	3'-9	
586	3	12'-10	
587	3	16'-10	
588	2	5'-3	
#5	3	7'-3	
Total Epoxy Coated Steel			393

MISCELLANEOUS

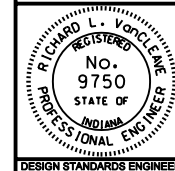
Concrete, Class C (yd ³)	1.6
Surface Seal (ft ²)	113

INDIANA DEPARTMENT OF TRANSPORTATION

**CONCRETE BRIDGE RAILING
TRANSITION TYPE WBC**

MARCH 2003

STANDARD DRAWING NO. E 706-TWBC-03



/s/ Richard L. VanCleave 3-03-03
DESIGN STANDARDS ENGINEER DATE

/s/ Richard K. Smutzer 3-03-03
CHIEF HIGHWAY ENGINEER DATE

DESIGN STANDARDS ENGINEER