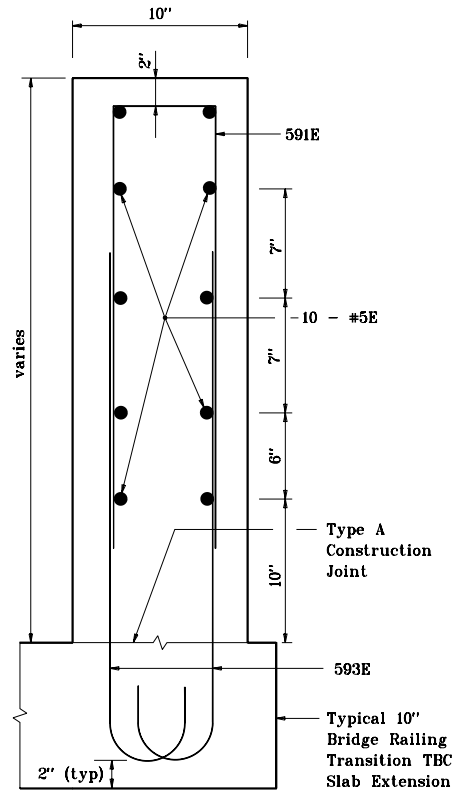
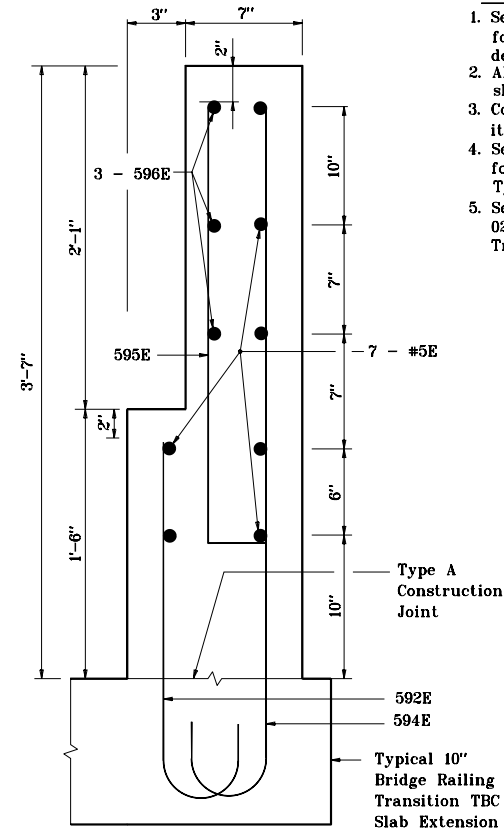


Section A - A



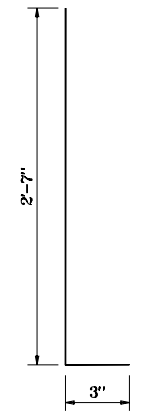
Section B - B



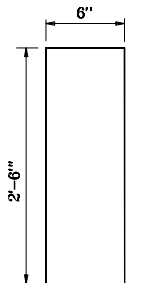
Section C - C

NOTES:

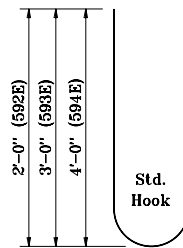
1. See Standard Drawing E 703-BRST-01 for standard 180° bar bending detail.
2. All reinforcing bars designated "E" shall be epoxy coated.
3. Concrete in bridge railing transition to be class C.
4. See Standard Drawing E 706-CBRT-02 for attachment of guardrail Type TGB.
5. See Standard Drawing E 706-TASE-01, 02 & 05 for Bridge Railing Transition TBC Slab Extension.



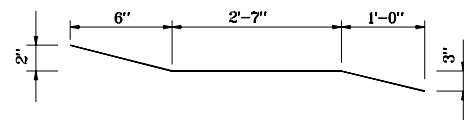
595E x 2'-10"



591E x 5'-6"



592E x 2'-10"
593E x 3'-7"
594E x 4'-7"



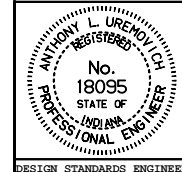
596E x 4'-3"

INDIANA DEPARTMENT OF TRANSPORTATION

**CONCRETE BRIDGE RAILING
 TRANSITION, TPF-2**

MAY 2000

STANDARD DRAWING NO. E 706-TTBP-04



/s/ Anthony L. Uremovich 5-01-00
 DESIGN STANDARDS ENGINEER DATE

/s/ Firooz Zandi 5-01-00
 CHIEF HIGHWAY ENGINEER DATE

DESIGN STANDARDS ENGINEER