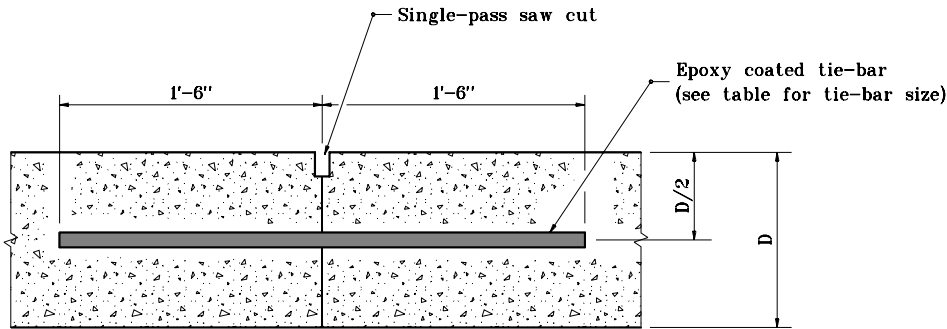
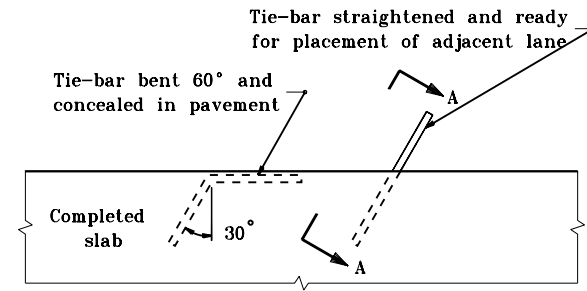


**TIE-BAR SIZES FOR LONGITUDINAL CONSTRUCTION JOINT**

| Pavement Thickness, D | Tie-Bar Size | Spacing                |
|-----------------------|--------------|------------------------|
| Less than 9"          | #5           | 3'-0" c/c              |
| 9" through 12"        | #6           | 3'-0" c/c              |
| Greater than 12"      | #6<br>or #7  | 2'-0" c/c<br>3'-0" c/c |



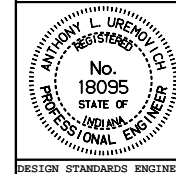
**SECTION A-A**



**PLAN VIEW**

**METHOD OF PLACING TIE-BAR  
FOR LONGITUDINAL CONSTRUCTION JOINT**

INDIANA DEPARTMENT OF TRANSPORTATION  
**LONGITUDINAL CONSTRUCTION  
 JOINT**  
 SEPTEMBER 1999  
 STANDARD DRAWING NO. **E 503-CCPJ-07**



*/s/ Anthony L. Urenovich* 9-01-99  
 DESIGN STANDARDS ENGINEER DATE

*/s/ Donald W. Lucas* 9-01-99  
 CHIEF HIGHWAY ENGINEER DATE

DESIGN STANDARDS ENGINEER