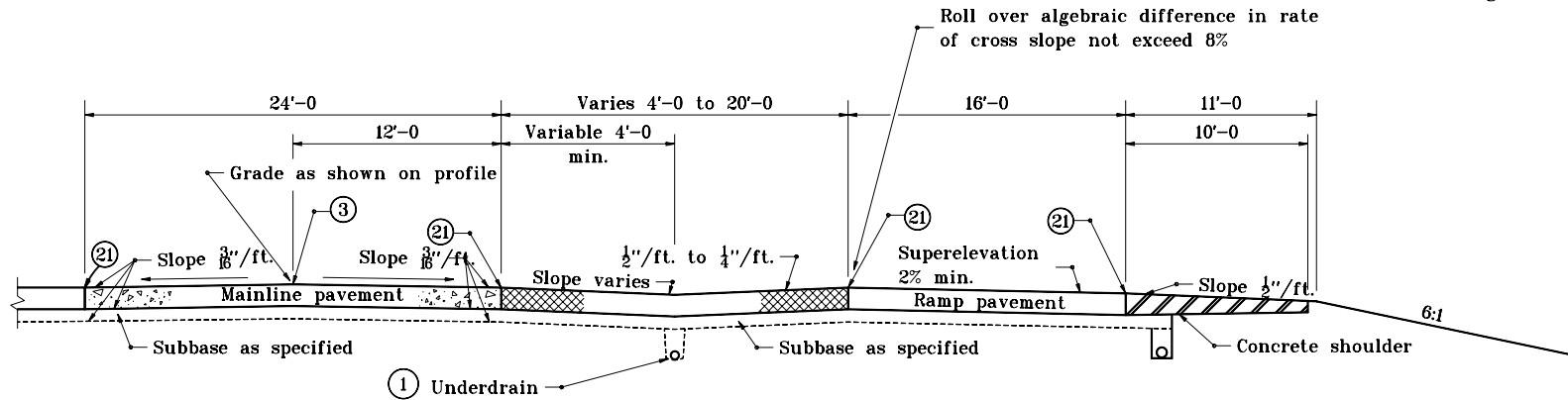
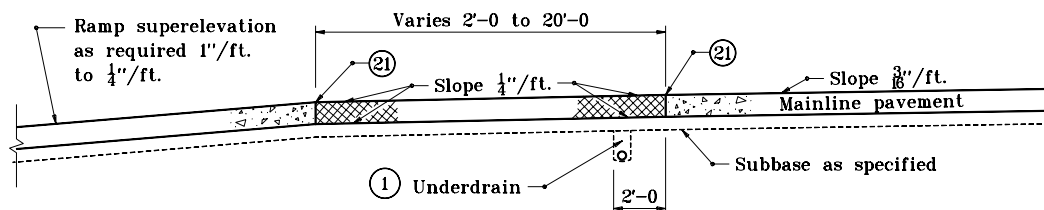


**GENERAL NOTES**

- ① For underdrain details see Standard Drawing E 718-UNDR-01.



**SECTION A-A**



**SECTION B-B**

**LEGEND**

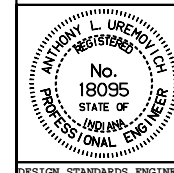
- Ⓐ Pavement type and thickness as specified for the mainline.
- Ⓑ Pavement type and thickness as specified for ramps.
- ③ Longitudinal joint
- ⑳ Longitudinal construction joint
- ▨ Concrete shoulder (Thickness of mainline pavement)
- ▧ Concrete shoulder (Thickness as specified on Typical Sections)

INDIANA DEPARTMENT OF TRANSPORTATION

**RAMP CROSS SECTIONS  
CONCRETE SHOULDERS**

JANUARY 1999

STANDARD DRAWING NO. E 501-RECS-03



DETAILS PLACED IN THIS FORMAT 11-15-99

/s/ Anthony L. Uremovich 11-15-99  
DESIGN STANDARDS ENGINEER DATE

/s/ Firooz Zandi 11-15-99  
CHIEF HIGHWAY ENGINEER DATE

DESIGN STANDARDS ENGINEER

ORIGINALLY APPROVED 1-04-99