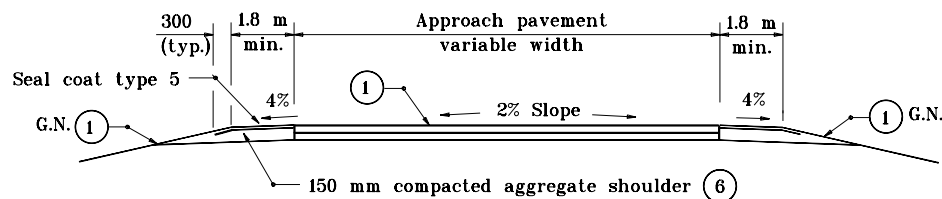
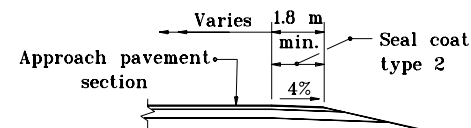


### PUBLIC ROAD APPROACH TYPE "B"

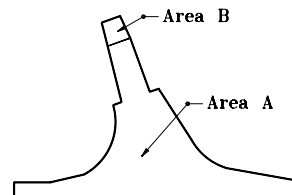


### SECTION A-A MINIMUM PAVEMENT SECTION

For ADT ≤ 1000, ESAL: 250,000 (7)



### SECTION B-B



PAY LIMITS FOR HMA FOR APPROACHES

Source Sheet: MI

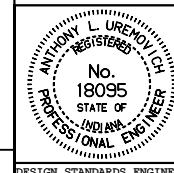
All dimensions are in mm unless otherwise specified.

INDIANA DEPARTMENT OF TRANSPORTATION

PUBLIC ROAD APPROACH  
TYPE B

SEPTEMBER 1999

STANDARD DRAWING NO. 610-PRAP-03



/s/ Anthony L. Uremovich 9-01-99  
DESIGN STANDARDS ENGINEER DATE

/s/ Donald W. Lucas 9-01-99  
CHIEF HIGHWAY ENGINEER DATE